

# GoBoard® LT

 **Johns Manville**  
A Berkshire Hathaway Company

*Durable, Ultra-lightweight, Waterproof Tile Backer Board*



GoBoard® LT is the latest ultra-light, waterproof tile backer board from Johns Manville. Just like the original GoBoard, it's engineered for durability, yet is up to 85% lighter than cement boards. GoBoard LT is easier to handle and can be cut right where it is installed using a basic utility knife without crumbling or disintegrating. And, best of all, it has waterproofing built-in.



#### **Fast installation\***

Complete tile projects in half the time or less with no mess.



#### **Ultra-lightweight**

Up to 85% lighter than cement boards, yet engineered for durability.



#### **Easy to cut, handle & install**

Simply cut with a utility knife and attach with GoBoard® Fasteners or GoBoard® Washers.



#### **Waterproof built-in\*\***

Seal only the board joints and fastener locations for a waterproof tile assembly per GoBoard® LT installation instructions.

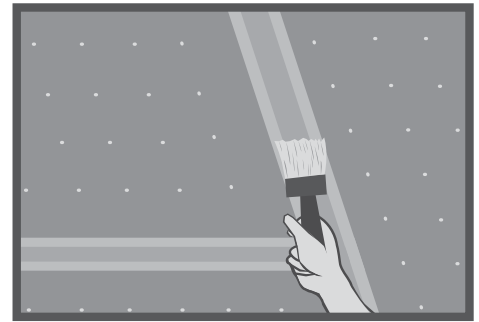
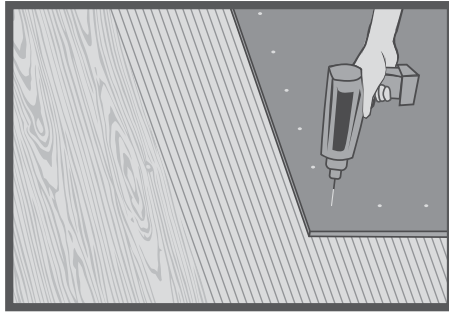
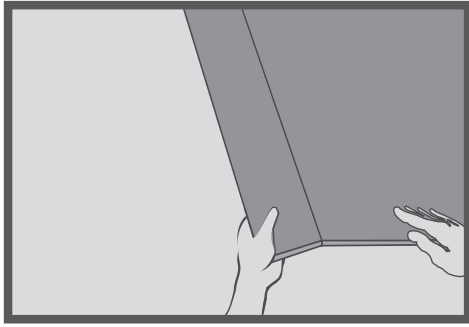


Available in two thicknesses for floors, countertops, walls, ceilings, showers, and tub surrounds.

\*A typical shower project, waterproof installation, following manufacturer's installation instructions.

\*\*Only board joints and fastener locations require a waterproof sealant per GoBoard LT installation instructions.

# 1/4" GoBoard® LT Installation Instructions for Floors, Countertops and Other Horizontal Surfaces



## WOOD FLOORS

### Framing:

- All framing should comply with local building code requirements.
- Support framing must be designed for a maximum allowable assembly deflection of  $L/360$  ( $L/720$  for stone) under all intended live loads.

### Control Joints:

- Consult TCNA Handbook installation Method EJ171.
- Location, width and details of control joints should follow sound architectural practices.
- Architect, builder or design professional must specify location of all control joints.

### Subfloor:

- Joist spacing should not exceed 24" on-center.
- Exterior grade  $5/8$ " plywood or  $3/4$ " OSB should be securely glued and fastened to joists.

### Installation:

- Measure GoBoard® LT, then cut completely along the measured line, using a basic utility knife. As an alternative, completely cut through GoBoard LT using a power tool. *See Safety and Handling section for proper PPE and precautions.*
- Stagger all board joints, ensuring that they do not line up with subfloor joints, and leave a  $1/8$ " gap between all corners, edges and changes of plane.
- Apply mortar, as specified in the Approved Materials section, to the subfloor, combing it into a ribbed setting bed with a  $1/4$ " square notched trowel.
- Laminate pre-cut GoBoard LT to subfloor by firmly pressing into mortar, ensuring that it is fully embedded.
- Fasten GoBoard LT to the subfloor with GoBoard® Fasteners flush to the surface of the board at a maximum spacing of 8" and within  $1/2$ " - 1" of the perimeter edges. For alternative fasteners specified in the Approved Materials section, the maximum spacing is 6".
- As an alternative to traditional fasteners, fasten GoBoard LT to the subfloor with GoBoard® Washers at a maximum spacing of 12" following the detailed instructions at [www.jm.com/canada/goboard](http://www.jm.com/canada/goboard).
- Fill all joint gaps with mortar, as specified in the Approved Materials section. Place 2" alkali resistant fiber glass mesh tape on the joint and embed with mortar, ensuring it is fully covered.
- If a waterproof installation is required, completely fill all joints with GoBoard® Pro Sealant and spread sealant on both sides of joint using a putty knife. Immediately apply optional GoBoard® Seam

Fabric over sealant using a clean putty knife and gentle sweeping motion. Do not soak through fabric with sealant. Finally, seal all fastener penetrations by applying sealant over each fastener and then spreading with a putty knife ensuring sealant covers entire fastener. See Approved Materials section for more information on waterproofing.

## CONCRETE FLOORS

### Installation:

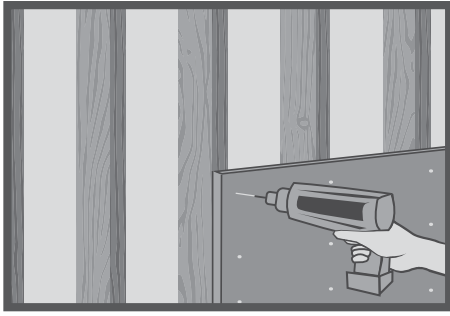
- Ensure that concrete floor is clean and fully cured and pre-fill surface imperfections with mortar, as specified in the Approved Materials section.
- Follow wood floor installation instructions. However, skip the fastening step and ensure that GoBoard LT is fully embedded in the mortar.

## COUNTERTOPS

### Installation:

- Securely fasten  $3/4$ " exterior grade plywood to the cabinet, ensuring that maximum surface variation is no more than  $1/8$ " in 10' from the required plane.
- Measure and cut GoBoard LT following instructions in previous section.
- Apply mortar, as specified in the Approved Materials section, to the plywood base, combing it into a ribbed setting bed with a  $1/4$ " square notched trowel. Fully embed GoBoard LT by firmly pressing it into the mortar.
- Fasten GoBoard LT to the  $3/4$ " plywood with GoBoard Fasteners flush to the surface of the board at a maximum spacing of 8" and within  $1/2$ " - 1" of the perimeter edges. For alternative fasteners specified in the Approved Materials section, the maximum spacing is 6".
- As an alternative to traditional fasteners, fasten GoBoard LT to the  $3/4$ " plywood with GoBoard Washers at a maximum spacing of 12" following the detailed instructions at [www.jm.com/canada/goboard](http://www.jm.com/canada/goboard).
- Completely fill all joints with GoBoard Pro Sealant and spread sealant on both sides of joint using a putty knife. Immediately apply optional GoBoard Seam Fabric over sealant using a clean putty knife and gentle sweeping motion. Do not soak through fabric with sealant. Finally, seal all fastener penetrations by applying sealant over each fastener and then spreading with a putty knife ensuring sealant covers entire fastener.

# 1/2" GoBoard® LT Installation Instructions for Walls, Showers and Ceilings



## WALLS

### Framing Requirements:

- All framing should comply with local building code requirements.
- Framing members shall be spaced a maximum of 16" on-center and shall be a minimum of 2"x 4" nominal (wood) or No. 20 gauge (metal).
- Studs shall be furred out flush with receptors and GoBoard LT edges should be continuously supported.
- As an alternative to furring strips, GoBoard LT can be wet-shimmed by applying thin set mortar directly to studs.

### Installation:

- Measure GoBoard LT, then cut completely along the measured line, using a basic utility knife. As an alternative, completely cut through GoBoard LT using a power tool. Pre-marking stud positions on GoBoard LT will aid in fastening. *See Safety and Handling section for proper PPE and precautions.*
- **Preferred Installation Method:** Install GoBoard LT leaving 1/8" gaps between all board edges, corners and changes of plane. GoBoard Spacers, tile spacers or paint sticks can be used to help maintain proper gapping between boards while installing fasteners. Fasten GoBoard LT to studs with GoBoard Fasteners flush to the surface of the board at a maximum spacing of 8" and within 1/2" - 1" of the perimeter edges. For alternative fasteners specified in the Approved Materials section, the maximum spacing is 6".
- As an alternative to traditional fasteners, fasten GoBoard LT to the studs with GoBoard Washers at a maximum spacing of 12" following the detailed instructions at [www.jm.com/canada/goboard](http://www.jm.com/canada/goboard).
- For waterproof applications requiring ANSI A118.10, seal all joints and fastener penetrations with GoBoard Pro Sealant or a sealant specified in the Approved Materials section.
- Once all boards are installed with required 1/8" gaps, seal joints by liberally applying a continuous bead of sealant making sure to completely fill the joint. Cutting a 1/8" hole in the sealant nozzle will help force sealant into joint. Spread excess sealant with a putty knife at least 1" beyond either side of joint keeping in mind the slightest pin hole may result in a leak, so careful attention is required when sealing joints. Depending on climate, GoBoard Pro Sealant can begin to skin over in as little as 15 minutes.
- Optionally, joints can be reinforced with GoBoard Seam Fabric following detailed instructions at [www.jm.com/canada/goboard](http://www.jm.com/canada/goboard).
- Once all board joints have been sealed, seal all fastener locations by applying a large bead of sealant over each fastener and then spreading sealant with a putty knife making sure each fastener is completely covered with sealant.

- **Joint Sealing Alternative:** Liberally apply a continuous bead of GoBoard Pro Sealant, or a sealant as specified in the Approved Materials section, to the bottom edge of GoBoard LT so that when it is butted at the base of adjacent board the sealant squeezes out. To comply with ANSI A118.10 and GoBoard warranty, there must be at least 1/8" gap between GoBoard LT that is completely filled with sealant. Sealant must extend onto GoBoard LT surface at least 1" beyond joint on either sides. Fasten GoBoard LT to the studs with GoBoard Fasteners flush to the surface of the board at a maximum spacing of 8" and within 1/2" - 1" of the perimeter edges. For alternative fasteners specified in the Approved Materials section, the maximum spacing is 6".

## STEAM SHOWERS

- **Residential Steam Showers:** Follow GoBoard LT wall and ceiling instructions. However, either first install a manufacturer approved vapor barrier directly to the wall studs and ceiling framing behind GoBoard LT, per manufacturer's instructions. Or install a manufacturer approved vapor barrier or waterproof membrane over the external surface of GoBoard LT per manufacturer's instructions.

## CEILING

### Framing Requirements:

- All framing should comply with local building code requirements and must be capable of supporting total system dead load with deflection not to exceed L/360 of the span.
- Framing members shall be spaced a maximum of 16" on-center and GoBoard LT edges should be continuously supported.

### Installation:

- Starting on one edge of the ceiling, measure the first GoBoard LT to orient in the same length-wise direction as the wall installation and then proceed with cutting methods as previously discussed.
- Fasten GoBoard LT to the ceiling studs with GoBoard Fasteners flush to the surface of the board at a maximum spacing of 6" and within 1/2" - 1" of the perimeter edges. For alternative fasteners specified in the Approved Materials section, the maximum spacing is 4".
- As an alternative to traditional fasteners, fasten GoBoard LT to the ceiling studs with GoBoard Washers at a maximum spacing of 12" following the detailed instructions at [www.jm.com/canada/goboard](http://www.jm.com/canada/goboard).
- Seal all GoBoard LT joints, change of plane joints and fastener locations following wall instructions.

# GoBoard® LT Approved Materials, Safety, Technical & Other Information

## APPROVED MATERIALS

- **Fastening: Wood** – GoBoard® Fasteners (1¼" long), GoBoard® Washers, backer board screws (1¼" long), galvanized roofing nails (1½" long) or 16 gauge galvanized staples (1" x 1").
- **Steel Framing** – GoBoard Fasteners (1¼" long), GoBoard Washers, or backer board screws (1¼" long).
- **Bonding:** Dry set mortar compliant with ANSI A118.1 standard or Polymer modified thin-set mortar compliant with or ANSI A118.4 standard.
- **Joint Sealing:** GoBoard® Pro Sealant (see [www.jm.com/canada/goboard](http://www.jm.com/canada/goboard) for approved alternative sealants).
- **Grout:** Cement grout compliant with ANSI A118.6 standard, high performance cement grout compliant with ANSI A118.7 standard or epoxy grout compliant with ANSI A118.8 standard.
- **Tools:** Utility knife, pencil or pen for marking, straight edge, measuring tape, flat putty knife, corner putty knife, appropriate screw fastening device, ¼" square notched trowel, caulk gun and 1"-3" paint brush (for liquid sealant).

## LIMITATIONS

- GoBoard LT must not be used as a structural load bearing member. Follow all local and national building codes.
- In flooring applications, GoBoard LT is for Residential and Light Commercial use only.
- Fully embed GoBoard LT into mortar, as specified in the Approved Materials section, prior to fastening for floor applications.
- Where waterproof installations are required, ensure that all joints and fastener locations are sealed with GoBoard Pro Sealant or a sealant as specified in the Approved Materials section. All joints must have at least a 1/8" gap that is completely filled with sealant that extends at least 1" beyond either side of joints.

## TECHNICAL DATA

Property	Method	GoBoard® LT (¼")	GoBoard® LT (½")
Dimensions (feet)	ASTM C473	3'x5, 4'x8'	3'x5, 4'x8'
Thickness (inches)	ASTM C473	0.25	0.50
Board Weight (lbs/ft²)		0.35	0.40
R-Value (°F · ft² · h/BTU)	ASTM C518	1.2	2.3
Compressive Strength (avg. psi)	ASTM D2394	250	100
Moisture Movement (%)	ASTM D1037	<0.07	<0.07
Surface Burning Characteristics <sup>1</sup>	ASTM E84	Pass	Pass
Waterproof	ASTM D4068	Pass <sup>2</sup>	Pass <sup>2</sup>
WVT Permeance (perms)	ASTM E96	<1	<1
Resistance to Fungi / Bacteria	ASTM G21/G22	No Growth	No Growth
Freeze Thaw	ASTM C666	>25	>25
Robinson Floor Test	ASTM C627	Light Commercial	Not Rated For Floors

<sup>1</sup> Per International Building Code Requirements

<sup>2</sup> ANSI 118.10 certified, <sup>3</sup> pending

- For steam shower applications, an additional vapor must be used or applied.
- For floor installations, tiles installed onto GoBoard LT must be a minimum of 6" in size (individual tile dimensions).

## SAFETY & HANDLING

- **Safety:** Please wear gloves, safety glasses and long sleeve shirts and pants and follow good safety practices when installing GoBoard LT. Temporary mechanical abrasion (itching) of skin, eyes and respiratory tract may occur upon exposure to fibers or dust during handling. GoBoard LT contains no cement.
- **Storage and Handling:** GoBoard LT should be delivered to distributors in unopened packages and stored flat and in an enclosed shelter.

## LIMITED WARRANTY

### LIMITED WARRANTY; SPECIFICATIONS

All products sold are subject to the following limited warranty: Johns Manville ("Seller") warrants that for a period of one year from the date of purchase the product will be free from defects in material and workmanship and is manufactured in all material respects to Seller's product specifications.

SELLER DISCLAIMS ALL OTHER REPRESENTATIONS AND WARRANTIES OF ANY KIND, EXPRESS OR IMPLIED, IN FACT OR IN LAW, INCLUDING, WITHOUT LIMITATION, THE IMPLIED WARRANTY OF MERCHANTABILITY AND THE IMPLIED WARRANTY OF FITNESS FOR A PARTICULAR PURPOSE. Every claim under this limited warranty shall be deemed waived unless in writing and received by Seller within 10 days of product purchase if visibly damaged or defective, and, otherwise, within 30 days after the defect to which each claim relates is discovered, or should have been discovered, but in no event longer than 1 year after product purchase.

### LIMITATION OF REMEDY

PURCHASER'S EXCLUSIVE REMEDY AND THE LIMIT OF SELLER'S LIABILITY FOR BREACH OF THIS LIMITED WARRANTY, WHETHER BASED ON NEGLIGENCE, BREACH OF WARRANTY, STRICT LIABILITY, OR ANY OTHER THEORY AT LAW OR IN EQUITY, SHALL BE, AT SELLER'S OPTION, REPAIR, REPLACEMENT WITH A LIKE QUANTITY OF NONDEFECTIVE PRODUCT OR REFUND OF THE PURCHASE PRICE.

### NO RECOVERY OF CONSEQUENTIAL OR SPECIAL DAMAGES

IN NO EVENT SHALL SELLER BE LIABLE FOR ANY CONSEQUENTIAL, SPECIAL, INCIDENTAL, INDIRECT OR PUNITIVE DAMAGES, INCLUDING, WITHOUT LIMITATION, ANY CLAIMS OF PROPERTY DAMAGE, WHETHER BASED UPON BREACH OF WARRANTY, NEGLIGENCE, STRICT LIABILITY, TORT, BREACH OF CONTRACT, OR ANY OTHER LEGAL THEORY.

Some states do not allow the exclusion or limitation of warranties or do not allow the exclusion or limitation of incidental or consequential damages, so the above disclaimers may not apply to you.

<sup>1</sup>Per International Building Code Requirements

<sup>2</sup>ANSI A118.10 certified

- GoBoard LT is waterproof.
- GoBoard LT core is not made from polystyrene and will not melt and flow.

## Installation Guide:

visit [www.JM.com/Canada/GoBoard](http://www.JM.com/Canada/GoBoard)

