

GoBoard® LT

 **Johns Manville**
A Berkshire Hathaway Company

Durable, Ultra-lightweight, Waterproof Tile Backer Board



GoBoard® LT is the latest ultra-light, waterproof tile backer from Johns Manville. Just like the original GoBoard, it's engineered for durability, yet is up to 85% lighter than cement boards. GoBoard LT is easier to handle and can be cut right where it's installed with a basic utility knife without crumbling or disintegrating. And, best of all, it has waterproofing already built-in.



Fast installation*

Complete shower tile projects in half the time or less



Ultra-lightweight

Up to 85% lighter than cement boards, yet engineered for durability



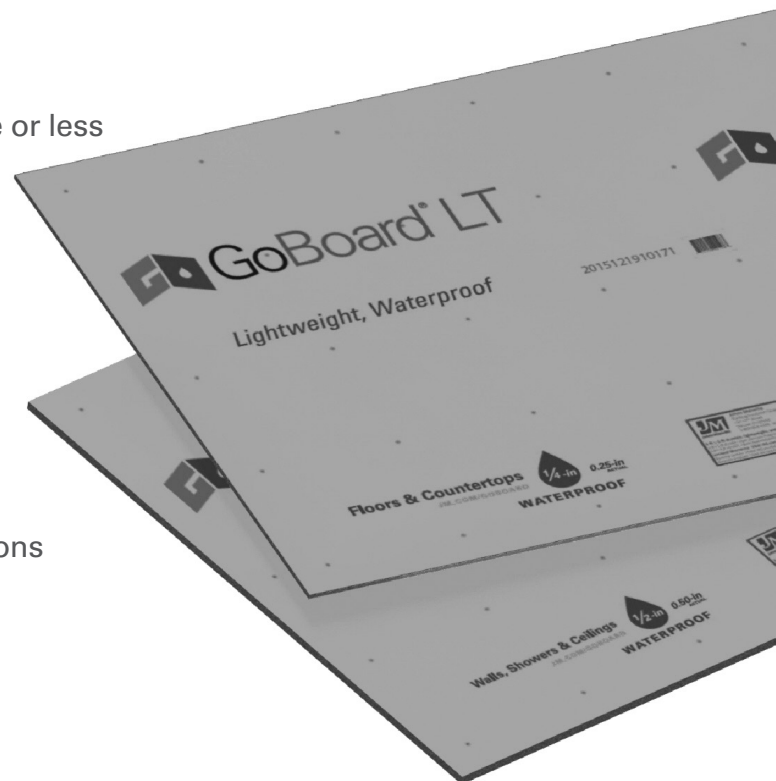
Easy to cut, handle & install

Simply attach with GoBoard® Fasteners or GoBoard® Washers



Waterproof built-in**

Seal only the board joints and fastener locations with GoBoard® Sealant



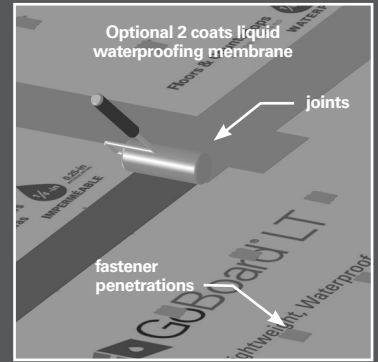
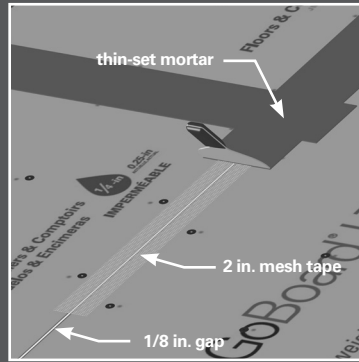
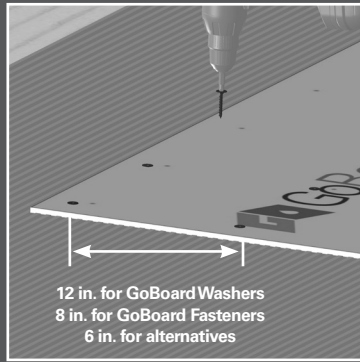
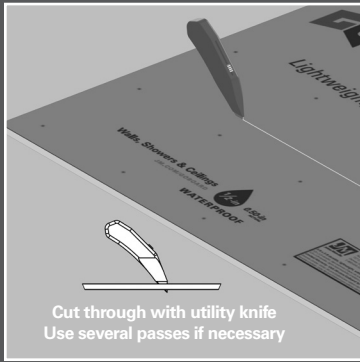
GoBoard LT is available in two thicknesses:

- ¼" for floors and countertops
- ½" for walls, showers and ceilings

*A typical shower project, waterproof installation, following manufacturer's installation instructions.

**Only board joints and fastener locations require a waterproof sealant per GoBoard LT installation instructions.

GoBoard® LT 1/4" for Floors & Countertops – Installation Instructions



WOOD FLOORS

Framing, Control Joints and Subfloor Requirements:

Framing:

- All framing should comply with local building code requirements.
- Support framing must be designed for a maximum allowable assembly deflection of L/360 (L/720 for stone) under all intended live loads.

Control Joints:

- Consult TCNA Handbook Installation Method EJ171.
- Location, width and details of control joints should follow sound architectural practices.
- Architect, builder or design professional must specify location of all control joints.

Subfloor:

- Joist spacing should not exceed 24" on-center.
- Exterior grade 5/8" plywood or 3/4" OSB should be securely glued and fastened to joists.

Installation:

- Measure GoBoard LT, then cut completely with a utility knife along measured line.
- Stagger all board joints, ensuring that they do not line up with subfloor joints, and leave 1/8" gaps between all corners and edges.
- Apply mortar, as specified in the Approved Materials section, to the subfloor, combing it into a ribbed setting bed with a 1/4" square notched trowel.
- Laminate pre-cut GoBoard LT to subfloor by firmly pressing it into the mortar, ensuring that it is fully embedded.
- Fasten GoBoard LT to the subfloor with GoBoard® Fasteners flush to the surface of the board at a maximum spacing of 8" and within 1/2" - 1" of the perimeter edges. For alternative fasteners specified in the Approved Materials section, the maximum spacing is 6". The pre-printed dots can be used for reference.
- As an alternative to traditional fasteners, fasten GoBoard LT to the subfloor with GoBoard® Washers at a maximum spacing of 12" following the detailed instructions at www.JM.com/GoBoardLT or www.JM.com/Canada/GoBoardLT.
- Fill all joint gaps with mortar, as specified in the Approved Materials section. Place 2" alkali resistant fiber glass mesh tape on the joint and embed with mortar, ensuring it is fully covered.

- If a waterproof installation is required, seal all joints and fastener locations with two coats of liquid waterproofing membrane, as specified in the Approved Materials section, making sure to extend liquid water proofing membrane at least 1" beyond mortar.

CONCRETE FLOORS

Installation:

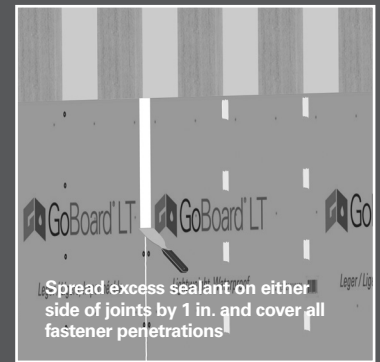
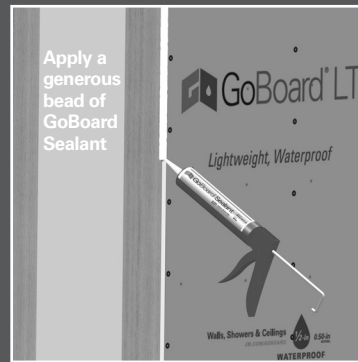
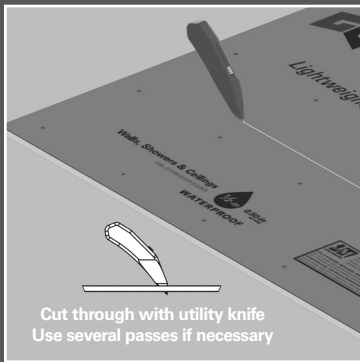
- Ensure that concrete floor is clean and fully cured and pre-fill surface imperfections with mortar, as specified in the Approved Materials section.
- Follow wood floor installation instructions. However, skip the fastening step and ensure that GoBoard LT is fully embedded in the mortar

COUNTERTOPS

Installation:

- Securely fasten 3/4" exterior grade plywood to the cabinet, ensuring that maximum surface variation is no more than 1/8" in 10' from the required plane.
- Measure GoBoard LT, then cut completely with a utility knife along measured line.
- Apply mortar, as specified in the Approved Materials section, to the plywood base, combing it into a ribbed setting bed with a 1/4" square notched trowel. Fully embed GoBoard LT by firmly pressing it into the mortar leaving 1/8" gaps between boards.
- Fasten GoBoard LT to the 3/4" plywood with GoBoard Fasteners flush to the surface of the board at a maximum spacing of 8" and within 1/2" - 1" of the perimeter edges. For alternative fasteners specified in the Approved Materials section, the maximum spacing is 6".
- As an alternative to traditional fasteners, fasten GoBoard LT to the 3/4" plywood with GoBoard Washers at a maximum spacing of 12" following the detailed instructions at www.JM.com/GoBoardLT or www.JM.com/Canada/GoBoardLT.
- Fill all joint gaps with mortar, as specified in the Approved Materials section. Place 2" alkali resistant fiber glass mesh tape on the joint and embed with mortar, ensuring it is fully covered.
- If a waterproof installation is required, seal all joints and fastener locations with two coats of liquid waterproofing membrane as specified in the Approved Materials section. Making sure to extend liquid waterproofing membrane at least 1" beyond mortar.

GoBoard® LT ½" for Walls, Showers & Ceilings – Installation Instructions



WALLS

Framing Requirements:

- All framing should comply with local building code requirements.
- Framing members shall be spaced a maximum of 16" on-center and shall be a minimum of 2"x 4" nominal (wood) or No. 20 gauge (metal).
- Studs shall be furred out flush with receptors and GoBoard LT edges should be continuously supported.

Installation:

- Measure the first GoBoard LT to fit at the bottom of the wall, then cut completely with a utility knife along measured line. Pre-marking the stud positions on GoBoard LT will aid in fastening or use the pre-printed dots for reference.
- Liberally apply a continuous bead of GoBoard® Sealant, or a sealant as specified in the Approved Materials section, to the bottom edge of GoBoard LT so that when it is butted at the base the sealant squeezes out. To comply with the GoBoard LT warranty, there must be at least ⅛" gap between GoBoard LT and base that is completely filled with sealant. Sealant must extend onto GoBoard LT surface at least 1" beyond joint on either sides. The slightest pin hole may result in a leak, so careful attention is required when sealing joints. Fasten GoBoard LT to the studs with GoBoard® Fasteners flush to the surface of the board at a maximum spacing of 6" and within ½" - 1" of the perimeter edges. For alternative fasteners specified in the Approved Materials section, the maximum spacing is 4".
- As an alternative to traditional fasteners, fasten GoBoard LT to the studs with GoBoard® Washers at a maximum spacing of 12" following the detailed instructions at www.JM.com/GoBoardLT or www.JM.com/Canada/GoBoardLT.
- Again, liberally apply a continuous bead of GoBoard Sealant, or a sealant as specified in the Approved Materials section, to the top edge so that when GoBoard LT is butted the sealant squeezes out. Ensure a tight seal at the joint leaving an ⅛" gap. Fasten GoBoard LT to the studs as above, and spread the excess sealant with a putty knife or other flat surface to at least 1" beyond either side of the joint.
- Once all boards have been installed in this manner, seal all fastener locations and joints (between boards and at all corners and other changes of plane) with GoBoard Sealant, or a sealant as specified in the Approved Materials section. Make sure each fastener location is completely covered with at least a 2" diameter patch centered over the fastener. This can be quickly achieved with a 3" putty knife. All joints should be completely filled with sealant and sealant spread 1" beyond either side of joint.

- Alternatively, GoBoard LT can be installed first, with ⅛" gaps between all board edges, and then sealed. When filling the ⅛" joints, ensure the joints are completely filled by forcing sealant into all joints with a putty knife.
- **Steam Showers:** Follow GoBoard LT wall and ceiling installation instructions. However, either first install a manufacturer approved vapor barrier directly to the wall studs and ceiling framing behind GoBoard LT per the manufacturer's instructions or install a manufacturer approved vapor barrier or waterproof membrane over the external surface of GoBoard LT per the manufacturer's instructions.

CEILINGS

Framing Requirements:

- All framing should comply with local building code requirements and must be capable of supporting total system dead load with deflection not to exceed L/360 of the span.
- Framing members shall be spaced a maximum of 16" on-center and GoBoard LT edges should be continuously supported.

Installation:

- Starting on one edge of the ceiling, measure the first GoBoard LT to orient in the same length-wise direction as the wall installation and then proceed with cutting as previously discussed.
- Utilizing either joint sealing method in the wall installation instructions, fasten GoBoard LT to the ceiling studs with GoBoard Fasteners flush to the surface of the board at a maximum spacing of 6" and within ½" - 1" of the perimeter edges. For alternative fasteners specified in the Approved Materials section, the maximum spacing is 4".
- As an alternative to traditional fasteners, fasten GoBoard LT to the ceiling studs with GoBoard Washers at a maximum spacing of 12" following the detailed instructions at www.JM.com/GoBoardLT or www.JM.com/Canada/GoBoardLT.
- Working across the remainder of the ceiling, ensure that all GoBoard LT joints, change of plane joints and fastener locations are sealed.

APPROVED MATERIALS

- Fastening:**
Wood – GoBoard® Fasteners (1 ¼" long), GoBoard® Washers, backer board screws (1 ¼" long) or galvanized roofing nails (1 ½" long).
Steel Framing – GoBoard® Fasteners (1 ¼" long), GoBoard® Washers, or backer board screws (1 ¼" long).
- Bonding:** Dry set mortar compliant with ANSI A118.1 standard or polymer modified thin-set mortar compliant with ANSI A118.4 standard.
- Joint Sealing:** GoBoard® Sealant (see www.JM.com/GoBoardLT or www.JM.com/Canada/GoBoardLT for approved alternative sealants) or 2" wide polymer-coated alkali-resistant fiber glass mesh tape and mortar, as above, coated with a liquid waterproofing membrane for waterproof installations.
- Grout:** Cement grout compliant with ANSI A118.6 standard, high performance cement grout compliant with ANSI A118.7 standard or epoxy grout compliant with ANSI A118.8 standard.
- Tools:** Utility knife, pencil or pen for marking, straight edge, measuring tape, putty knife, appropriate roofing nail or backer board screw fastening device, ¼" square notched trowel, caulk gun and 1"–3" paint brush (for liquid waterproofing membrane).

LIMITATIONS

GoBoard LT must not be used as a structural load bearing member. Follow all local and national building codes. In flooring applications, GoBoard LT is for Residential and Light Commercial use only and should not be used as a shower pan base.

Do not use drywall nails, tape or joint compound. Fully embed GoBoard LT into mortar, as specified in the Approved Materials section, prior to fastening for floor applications.

Where waterproof installations are required, ensure that all joints and fastener locations are sealed with GoBoard Sealant or a sealant as specified in the Approved Materials section. All joints must have at least an ⅛" gap that is completely filled with sealant that extends at least 1" beyond either side of joints.

For steam showers, install a manufacturer approved vapor barrier directly to the wall studs and ceiling framing behind GoBoard LT per the manufacturer's instructions, or install a manufacturer approved vapor barrier or waterproof membrane over the external surface of GoBoard LT per the manufacturer's instructions.

For floor installations, tiles installed onto GoBoard LT must be a minimum of 6" in size (individual tile dimensions).

SAFETY & HANDLING

- Safety:** Please wear gloves, safety glasses and long sleeve shirts and pants and follow good safety practices when installing GoBoard LT. Temporary mechanical abrasion (itching) of skin, eyes and respiratory tract may occur upon exposure to fibers or dust during handling. GoBoard LT contains no cement.

- Storage and Handling:** GoBoard LT should be delivered to distributors in unopened packages and stored flat and in an enclosed shelter.

TECHNICAL DATA

Property	Method	GoBoard LT (¼")	GoBoard LT (½")
Dimensions (feet)	ASTM C473	3' x 5', 4' x 8'	3' x 5', 4' x 8'
Thickness (inches)	ASTM C473	0.25	0.50
Board Weight (lbs/ft²)		0.35	0.40
R-Value (°F · ft² · h/BTU)	ASTM C518	1.2	2.3
Compressive Strength (avg. psi)	ASTM D2394	250	100
Moisture Movement (%)	ASTM D1037	<0.07	<0.07
Surface Burning Characteristics	ASTM E84	Pass	Pass
Waterproof	ASTM D4068	Pass	Pass
WVT Permeance (perms)	ASTM E96	<1	<1
Resistance to Fungi / Bacteria	ASTM G21/G22	No Growth	No Growth
Freeze Thaw	ASTM C666	>25	>25
Robinson Floor Test	ASTM C627	Light Commercial	Not Rated for Floors

*Per International Building Code Requirements

LIMITED WARRANTY

LIMITED WARRANTY; SPECIFICATIONS

All products sold are subject to the following limited warranty: Johns Manville ("Seller") warrants that for a period of one year from the date of purchase the product will be free from defects in material and workmanship and is manufactured in all material respects to Seller's product specifications.

SELLER DISCLAIMS ALL OTHER REPRESENTATIONS AND WARRANTIES OF ANY KIND, EXPRESS OR IMPLIED, IN FACT OR IN LAW, INCLUDING, WITHOUT LIMITATION, THE IMPLIED WARRANTY OF MERCHANTABILITY AND THE IMPLIED WARRANTY OF FITNESS FOR A PARTICULAR PURPOSE. Every claim under this limited warranty shall be deemed waived unless in writing and received by Seller within 10 days of product purchase if visibly damaged or defective, and, otherwise, within 30 days after the defect to which each claim relates is discovered, or should have been discovered, but in no event longer than 1 year after product purchase.

LIMITATION OF REMEDY

PURCHASER'S EXCLUSIVE REMEDY AND THE LIMIT OF SELLER'S LIABILITY FOR BREACH OF THIS LIMITED WARRANTY, WHETHER BASED ON NEGLIGENCE, BREACH OF WARRANTY, STRICT LIABILITY, OR ANY OTHER THEORY AT LAW OR IN EQUITY, SHALL BE, AT SELLER'S OPTION, REPAIR, REPLACEMENT WITH A LIKE QUANTITY OF NONDEFECTIVE PRODUCT OR REFUND OF THE PURCHASE PRICE.

NO RECOVERY OF CONSEQUENTIAL OR SPECIAL DAMAGES

IN NO EVENT SHALL SELLER BE LIABLE FOR ANY CONSEQUENTIAL, SPECIAL, INCIDENTAL, INDIRECT OR PUNITIVE DAMAGES, INCLUDING, WITHOUT LIMITATION, ANY CLAIMS OF PROPERTY DAMAGE, WHETHER BASED UPON BREACH OF WARRANTY, NEGLIGENCE, STRICT LIABILITY, TORT, BREACH OF CONTRACT, OR ANY OTHER LEGAL THEORY.

Some states do not allow the exclusion or limitation of warranties or do not allow the exclusion or limitation of incidental or consequential damages, so the above disclaimers may not apply to you.

- GoBoard LT is waterproof.
- GoBoard LT core is not made from polystyrene and will not melt and flow.

Installation Guide:

visit www.JM.com/GoBoardLT or www.JM.com/Canada/GoBoardLT

