



GoBoard®



Johns Manville
A Berkshire Hathaway Company

Durable, Lightweight, Waterproof Tile Backer Board



GoBoard® is the lightweight, waterproof tile backer board from Johns Manville. It's engineered for durability, yet is up to 80% lighter than cement boards. GoBoard is easy to handle and can be cut right where it's installed with a basic utility knife without crumbling or disintegrating. And, best of all, it has waterproofing already built-in.



Fast installation*

Complete tile projects in half the time or less with no mess.



Ultra-lightweight

Up to 80% lighter than cement boards, yet engineered for durability.



Easy to cut, handle & install

Simply cut with a utility knife and attach with GoBoard® Fasteners or GoBoard® Washers.



Waterproof built-in**

Seal only the board joints and fastener locations for a waterproof tile assembly per GoBoard® installation instructions.

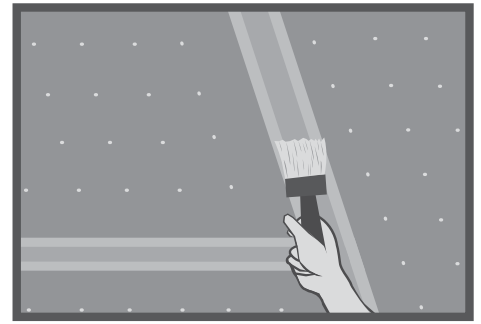
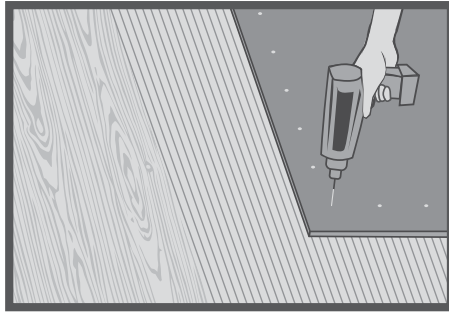
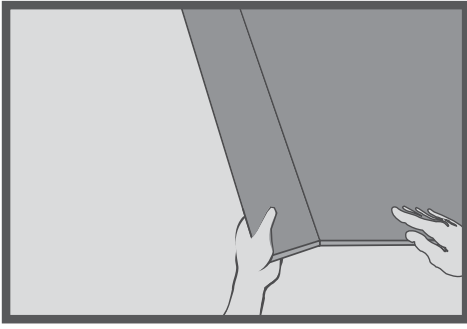
Available in six thicknesses for walls, ceilings, showers, tub surrounds, benches, shelves, vanities, floors and countertops.

*A typical shower project, waterproof installation, following manufacturer's installation instructions.

**Only board joints and fastener locations require a waterproof sealant per GoBoard installation instructions.



1/4" GoBoard® Installation Instructions for Floors, Countertops and Other Horizontal Surfaces



WOOD FLOORS

Framing:

- All framing should comply with local building code requirements.
- Support framing must be designed for a maximum allowable assembly deflection of L/360 (L/720 for stone) under all intended live loads.

Control Joints:

- Consult TCNA Handbook installation Method EJ171.
- Location, width and details of control joints should follow sound architectural practices.
- Architect, builder or design professional must specify location of all control joints.

Subfloor:

- Joist spacing should not exceed 24" on-center.
- Exterior grade $\frac{5}{8}$ " plywood or $\frac{3}{4}$ " OSB should be securely glued and fastened to joists.

Installation:

- Measure GoBoard, then score and snap. To score, cut through outer facing with a utility knife along your measured line. To snap, firmly grab the board edge and quickly apply downward pressure at the scored line. Finally, cut the bottom facer at the snap line. As an alternative, completely cut through GoBoard using several strokes of a utility knife or a power tool. *See Safety and Handling section for proper PPE and precautions.*
- Stagger all board joints, ensuring that they do not line up with subfloor joints, and leave a $\frac{1}{8}$ " gap between all corners, edges and changes of plane.
- Apply mortar, as specified in the Approved Materials section, to the subfloor, combing it into a ribbed setting bed with a $\frac{1}{4}$ " square notched trowel.
- Laminate pre-cut GoBoard to subfloor by firmly pressing into mortar, ensuring that it is fully embedded.
- Fasten GoBoard to the subfloor with GoBoard® Fasteners flush to the surface of the board at a maximum spacing of 8" and within $\frac{1}{2}$ " - 1" of the perimeter edges. For alternative fasteners specified in the Approved Materials section, the maximum spacing is 6".
- As an alternative to traditional fasteners, fasten GoBoard to the subfloor with GoBoard® Washers at a maximum spacing of 12" following the detailed instructions at www.jm.com/goboard
- Fill all joint gaps with mortar, as specified in the Approved Materials section. Place 2" alkali resistant fiber glass mesh tape on the joint and embed with mortar, ensuring it is fully covered.
- If a waterproof installation is required, completely fill all joints

with GoBoard Pro Sealant and spread sealant on both sides of joint using a putty knife. Immediately apply optional GoBoard® Seam Fabric over sealant using a clean putty knife and gentle sweeping motion. Do not soak through fabric with sealant. Finally, seal all fastener penetrations by applying sealant over each fastener and then spreading with a putty knife ensuring sealant covers entire fastener. See Approved Materials section for more information on waterproofing.

CONCRETE FLOORS

Installation:

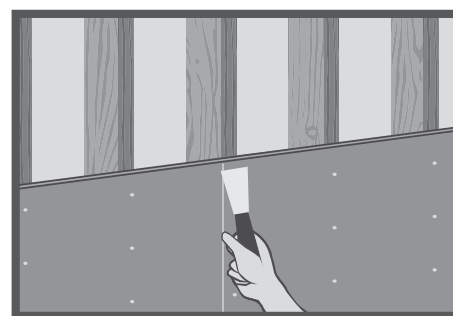
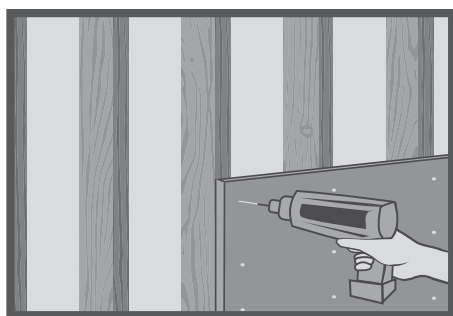
- Ensure that concrete floor is clean and fully cured and pre-fill surface imperfections with mortar, as specified in the Approved Materials section.
- Follow wood floor installation instructions. However, skip the fastening step and ensure that GoBoard Pro is fully embedded in the mortar.

COUNTERTOPS

Installation:

- Securely fasten $\frac{3}{4}$ " exterior grade plywood to the cabinet, ensuring that maximum surface variation is no more than $\frac{1}{8}$ " in 10' from the required plane.
- Measure and cut GoBoard following instructions in previous section.
- Apply mortar, as specified in the Approved Materials section, to the plywood base, combing it into a ribbed setting bed with a $\frac{1}{4}$ " square notched trowel. Fully embed GoBoard by firmly pressing it into the mortar.
- Fasten GoBoard to the $\frac{3}{4}$ " plywood with GoBoard Fasteners flush to the surface of the board at a maximum spacing of 8" and within $\frac{1}{2}$ " - 1" of the perimeter edges. For alternative fasteners specified in the Approved Materials section, the maximum spacing is 6".
- As an alternative to traditional fasteners, fasten GoBoard to the $\frac{3}{4}$ " plywood with GoBoard Washers at a maximum spacing of 12" following the detailed instructions at www.jm.com/goboard.
- Completely fill all joints with GoBoard Pro Sealant and spread sealant on both sides of joint using a putty knife. Immediately apply optional GoBoard Seam Fabric over sealant using a clean putty knife and gentle sweeping motion. Do not soak through fabric with sealant. Finally, seal all fastener penetrations by applying sealant over each fastener and then spreading with a putty knife ensuring sealant covers entire fastener.

1/2" and 5/8" GoBoard® Installation Instructions for Walls, Showers and Ceilings



WALLS

Framing Requirements:

- All framing should comply with local building code requirements.
- Framing members shall be spaced a maximum of 16" on-center and shall be a minimum of 2"x 4" nominal (wood) or No. 20 gauge (metal).
- Studs shall be furred out flush with receptors and GoBoard edges should be continuously supported.
- As an alternative to furring strips, GoBoard can be wet-shimmed by applying thin set mortar directly to studs.

Installation:

- Measure GoBoard, then score and snap. To score, cut through outer facing with a utility knife along your measured line. To snap, firmly grab the board edge and quickly apply downward pressure at the scored line. Finally, cut the bottom facer at the snap line. As an alternative, completely cut through GoBoard using several strokes of a utility knife or a power tool. Pre-marking stud positions on GoBoard will aid in fastening. *See Safety and Handling section for proper PPE and precautions.*
- **Preferred Installation Method:** Install GoBoard leaving 1/8" gaps between all board edges, corners and changes of plane. GoBoard Spacers, tile spacers or paint sticks can be used to help maintain proper gapping between boards while installing fasteners. Fasten GoBoard to studs with GoBoard Fasteners flush to the surface of the board at a maximum spacing of 8" and within 1/2" - 1" of the perimeter edges. For alternative fasteners specified in the Approved Materials section, the maximum spacing is 6".
- As an alternative to traditional fasteners, fasten GoBoard to the studs with GoBoard® Washers at a maximum spacing of 12" following the detailed instructions at www.jm.com/goboard.
- For waterproof applications requiring ANSI A118.10, seal all joints and fastener penetrations with GoBoard Pro Sealant or a sealant specified in the Approved Materials section.
- Once all boards are installed with required 1/8" gaps, seal joints by liberally applying a continuous bead of sealant making sure to completely fill the joint. Cutting a 1/8" hole in the sealant nozzle will help force sealant into joint. Spread excess sealant with a putty knife at least 1" beyond either side of joint keeping in mind the slightest pin hole may result in a leak, so careful attention is required when sealing joints. Depending on climate, GoBoard Pro Sealant can begin to skin over in as little as 15 minutes.
- Optionally, joints can be reinforced with GoBoard Seam Fabric following detailed instructions at www.jm.com/goboard.
- Once all board joints have been sealed, seal all fastener locations by applying a large bead of sealant over each fastener and then spreading sealant with a putty knife making sure each fastener is completely covered with sealant.

- **Joint Sealing Alternative:** Liberally apply a continuous bead of GoBoard Pro Sealant, or a sealant as specified in the Approved Materials section, to the bottom edge of GoBoard so that when it is butted at the base of adjacent board the sealant squeezes out. To comply with ANSI A118.10 and GoBoard warranty, there must be at least 1/8" gap between GoBoard that is completely filled with sealant. Sealant must extend onto GoBoard surface at least 1" beyond joint on either sides. Fasten GoBoard to the studs with GoBoard Fasteners flush to the surface of the board at a maximum spacing of 8" and within 1/2" - 1" of the perimeter edges. For alternative fasteners specified in the Approved Materials section, the maximum spacing is 6".

STEAM SHOWERS

- **Residential Steam Showers:** Follow GoBoard wall and ceiling instructions. However, either first install a manufacturer approved vapor barrier directly to the wall studs or ceiling framing behind GoBoard, per manufacturer's instructions. Or install a manufacturer approved vapor barrier or waterproof membrane over the external surface of GoBoard per manufacturer's instructions.

CEILINGS

Framing Requirements:

- All framing should comply with local building code requirements and must be capable of supporting total system dead load with deflection not to exceed L/360 of the span.
- Framing members shall be spaced a maximum of 16" on-center and GoBoard edges should be continuously supported.

Installation:

- Starting on one edge of the ceiling, measure the first GoBoard to orient in the same length-wise direction as the wall installation and then proceed with cutting methods as previously discussed.
- Fasten GoBoard to the ceiling studs with GoBoard Fasteners flush to the surface of the board at a maximum spacing of 8" and within 1/2" - 1" of the perimeter edges. For alternative fasteners specified in the Approved Materials section, the maximum spacing is 6".
- As an alternative to traditional fasteners, fasten GoBoard to the ceiling studs with GoBoard Washers at a maximum spacing of 12" following the detailed instructions at www.jm.com/goboard.
- Seal all GoBoard joints, change of plane joints and fastener locations following wall instructions.

FLOORS

- Follow 1/4" GoBoard installation instructions for wood or concrete floors.
- For in-floor heating systems, GoBoard should be installed under the heating elements.

GoBoard® Pro Approved Materials, Safety, Technical & Other Information

APPROVED MATERIALS

- **Fastening: Wood** – GoBoard® Fasteners (1¼" long), GoBoard® Washers, backer board screws (1¼" long), galvanized roofing nails (1½" long) or 16 gauge galvanized staples (1" x 1").
Steel Framing – GoBoard® Fasteners (1¼" long), GoBoard® Washers, or backer board screws (1¼" long).
- **Bonding:** Dry set mortar compliant with ANSI A118.1 standard or Polymer modified thin-set mortar compliant with or ANSI A118.4 standard.
- **Joint Sealing:** GoBoard® Pro Sealant (see www.jm.com/goboard for approved alternative sealants).
- **Grout:** Cement grout compliant with ANSI A118.6 standard, high performance cement grout compliant with ANSI A118.7 standard or epoxy grout compliant with ANSI A118.8 standard.
- **Tools:** Utility knife, pencil or pen for marking, straight edge, measuring tape, flat putty knife, corner putty knife, appropriate screw fastening device, ¼" square notched trowel, caulk gun and 1"–3" paint brush (for liquid sealant).

LIMITATIONS

- GoBoard must not be used as a structural load bearing member. Follow all local and national building codes.
- In flooring applications, GoBoard is for Residential and Light Commercial use only.
- Fully embed GoBoard into mortar, as specified in the Approved Materials section, prior to fastening for floor applications.
- Where waterproof installations are required, ensure that all joints and fastener locations are sealed with GoBoard Pro Sealant or a sealant as specified in the Approved Materials section. All joints must have at least a ⅛" gap that is completely filled with sealant that extends at least 1" beyond either side of joints.

TECHNICAL DATA

Property	Method	GoBoard® (¼")	GoBoard® (½")	GoBoard® (⅝")	GoBoard® (1", 1½", 2")
Dimensions (feet)	ASTM C473	3'x5, 4'x8'	3'x5, 4'x8'	4'x8'	4'x8'
Thickness (inches)	ASTM C473	0.26	0.47	0.60	1.0, 1.5, 2.0
Board Weight (lbs/ft²)		0.40	0.50	0.58	0.62, 0.81, 1.0
R-Value (°F · ft² · h/BTU)	ASTM C518	1.2	2.3	2.9	5, 7.5, 10
Compressive Strength (avg. psi)	ASTM D2394	250	200	200	125
Moisture Movement (%)	ASTM D1037	<0.07	<0.07	<0.07	<0.07
Surface Burning Characteristics¹	ASTM E84	Pass	Pass	Pass	Pass
Waterproof	ASTM D4068	Pass²	Pass²	Pass²	Pass²
WVT Permeance (perms)	ASTM E96	<1	<1	<1	<1
Resistance to Fungi / Bacteria	ASTM G21/G22	No Growth	No Growth	No Growth	No Growth
Freeze Thaw	ASTM C666	>25	>25	>25	>25
Robinson Floor Test	ASTM C627	Light Commercial	Light Commercial	—	—

- For steam shower applications, an additional vapor must be used or applied.
- For floor installations, tiles installed onto GoBoard must be a minimum of 6" in size (individual tile dimensions).

SAFETY & HANDLING

- **Safety:** Please wear gloves, safety glasses and long sleeve shirts and pants and follow good safety practices when installing GoBoard. Temporary mechanical abrasion (itching) of skin, eyes and respiratory tract may occur upon exposure to fibers or dust during handling. GoBoard contains no cement.
- **Storage and Handling:** GoBoard should be delivered to distributors in unopened packages and stored flat and in an enclosed shelter.

LIMITED WARRANTY

LIMITED WARRANTY; SPECIFICATIONS

All products sold are subject to the following limited warranty: Johns Manville ("Seller") warrants that for a period of one year from the date of purchase the product will be free from defects in material and workmanship and is manufactured in all material respects to Seller's product specifications.

SELLER DISCLAIMS ALL OTHER REPRESENTATIONS AND WARRANTIES OF ANY KIND, EXPRESS OR IMPLIED, IN FACT OR IN LAW, INCLUDING, WITHOUT LIMITATION, THE IMPLIED WARRANTY OF MERCHANTABILITY AND THE IMPLIED WARRANTY OF FITNESS FOR A PARTICULAR PURPOSE. Every claim under this limited warranty shall be deemed waived unless in writing and received by Seller within 10 days of product purchase if visibly damaged or defective, and, otherwise, within 30 days after the defect to which each claim relates is discovered, or should have been discovered, but in no event longer than 1 year after product purchase.

LIMITATION OF REMEDY

PURCHASER'S EXCLUSIVE REMEDY AND THE LIMIT OF SELLER'S LIABILITY FOR BREACH OF THIS LIMITED WARRANTY, WHETHER BASED ON NEGLIGENCE, BREACH OF WARRANTY, STRICT LIABILITY, OR ANY OTHER THEORY AT LAW OR IN EQUITY, SHALL BE, AT SELLER'S OPTION, REPAIR, REPLACEMENT WITH A LIKE QUANTITY OF NONDEFECTIVE PRODUCT OR REFUND OF THE PURCHASE PRICE.

NO RECOVERY OF CONSEQUENTIAL OR SPECIAL DAMAGES

IN NO EVENT SHALL SELLER BE LIABLE FOR ANY CONSEQUENTIAL, SPECIAL, INCIDENTAL, INDIRECT OR PUNITIVE DAMAGES, INCLUDING, WITHOUT LIMITATION, ANY CLAIMS OF PROPERTY DAMAGE, WHETHER BASED UPON BREACH OF WARRANTY, NEGLIGENCE, STRICT LIABILITY, TORT, BREACH OF CONTRACT, OR ANY OTHER LEGAL THEORY.

Some states do not allow the exclusion or limitation of warranties or do not allow the exclusion or limitation of incidental or consequential damages, so the above disclaimers may not apply to you.

¹Per International Building Code Requirements

²ANSI A118.10 certified

- GoBoard is waterproof.
- GoBoard core is not made from polystyrene and will not melt and flow.

Installation Guide:

visit www.JM.com/GoBoard

