



Dependable Through and Through

JM's dependable insulation products and team help complete new building on a Pennsylvania medical campus.

A uniform, consistent look, high quality products, reliable supply chain – these were all reasons why LC Insulations in Pennsylvania chose JM products for the plumbing and mechanical insulation work in a medical testing facility.

The new building is on an already existing medical facility campus in central Pennsylvania. Not overly large – two floors, about 150 by 50 feet in size – but LC Insulations President and CEO Mike McCowan said the job was intricate with all of the things that needed insulation. The insulation areas include steam processing for cleaning equipment, hot water, chilled water and lots of HVAC ducts.

“This was all in our wheelhouse, we do a lot of institutional and hospital, larger commercial HVAC and plumbing projects,” McCowan said. “We’ve done a number of hospitals for this mechanical contractor in the past years, so they invited us to take a look at this project because of our successes on the prior ones.”

PRODUCT

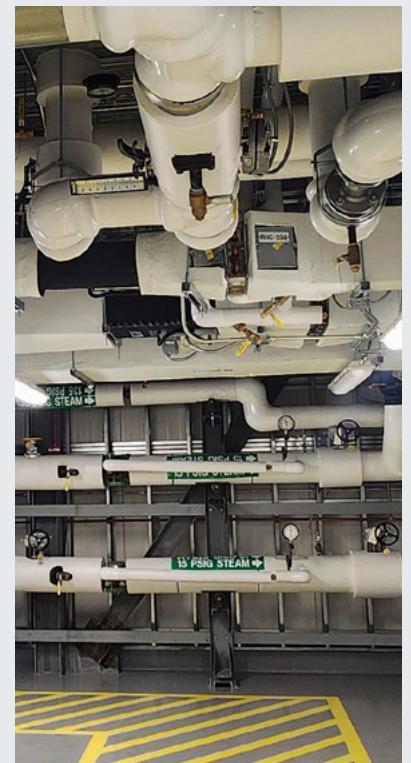
Zeston® PVC Jacketing
800 Series Spin-Glas®

LOCATION

Central Pennsylvania

INSTALLER

LC Insulations





Counting on the Supply Chain

LC Insulations was awarded the job back in 2021 but didn't get started until 2023 thanks to a variety of hold-ups including paperwork and delays due to the Covid-19 pandemic.

Once the crew got to work, McCowan said they needed a steady supply of products (they used white Zeston® PVC pipe jacketing as well as 800 Series Spin-Glas® board with an AP facing, and he was pleased that JM came through with flying colors.

"We had no problems getting as many fiberglass boards as we needed," he said. "JM had plenty in stock with many local suppliers. I'd get 50 carton deliveries twice a week, and that went on for two to three months. We used about 25,000 square feet.

"It's a testament that JM kept their distribution network going like they do. That's important to me."

Thanks to JM's quality supply chain, LC Insulations could use all JM products without worrying about running into a snag and having to either wait or use a mismatched product.

"I want to stick with a product, and I don't want to be in a supply chain issue," McCowan said. "JM stood up and whenever we needed something, it was non-stop, and the supply chain was robust and allowed us to finish on time."

LC Insulations


A small to medium-sized contractor based out of south central Pennsylvania, LC Insulations runs about 15 field workers. LC is a Certified VOB (Veteran-Owned Business Enterprise) and is a second generation, family-run company.

About 80% of the company's work is commercial or institutional (including hospitals, government and schools), and the remaining 20% is industrial work. While the majority of work is done in the Pennsylvania and mid-Atlantic area, McCowan said occasionally they do work for select customers elsewhere.

"We go on their coattails when they ask us to follow them because they want our quality of work and know what they're getting with us," McCowan said, noting they've worked on projects as far away as Florida, Las Vegas and even Hawaii.

For JM customer support or technical assistance, call 1-800-293-3393.



CONNECT WITH US:  800-654-3103  jm.com

©2024 Johns Manville. All Rights Reserved