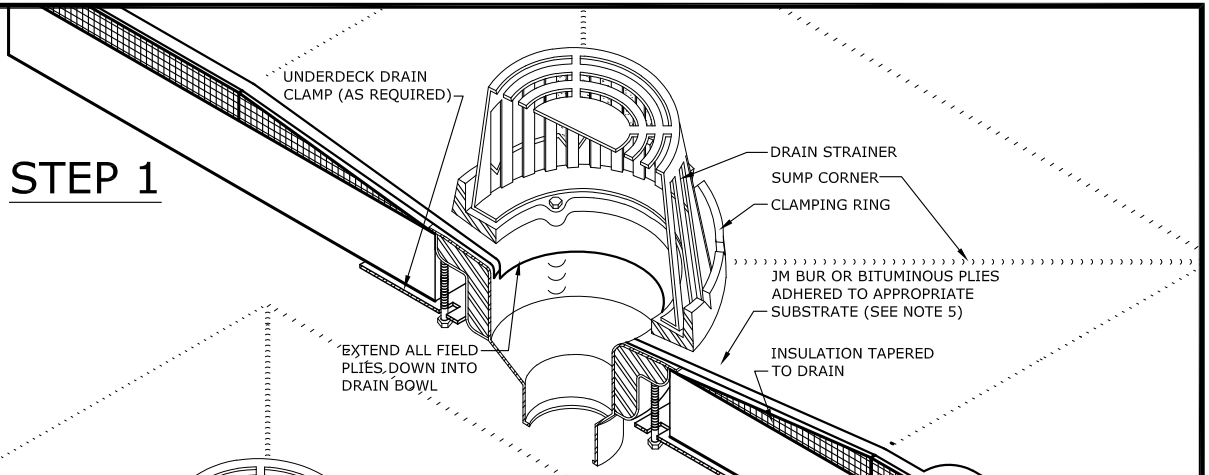
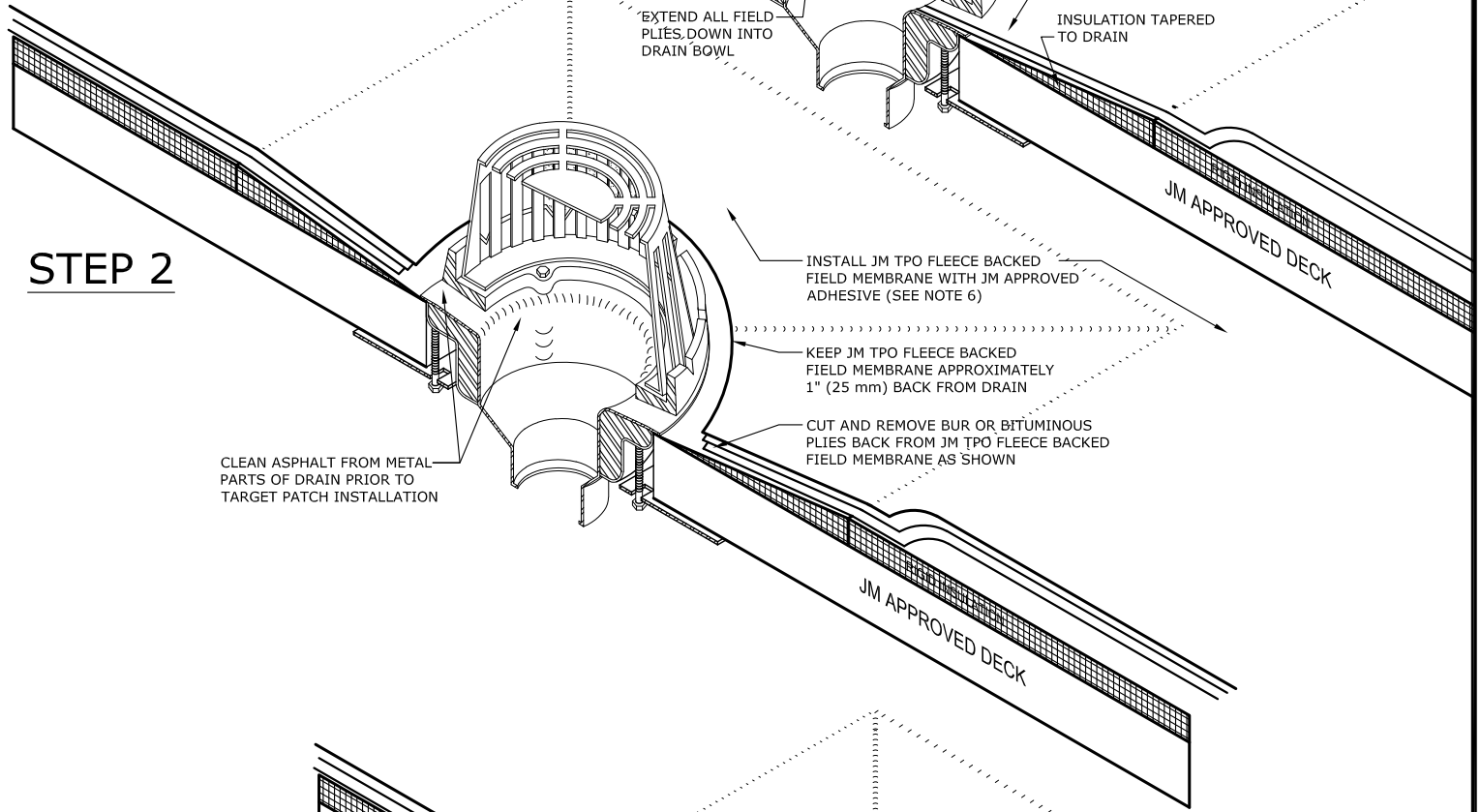


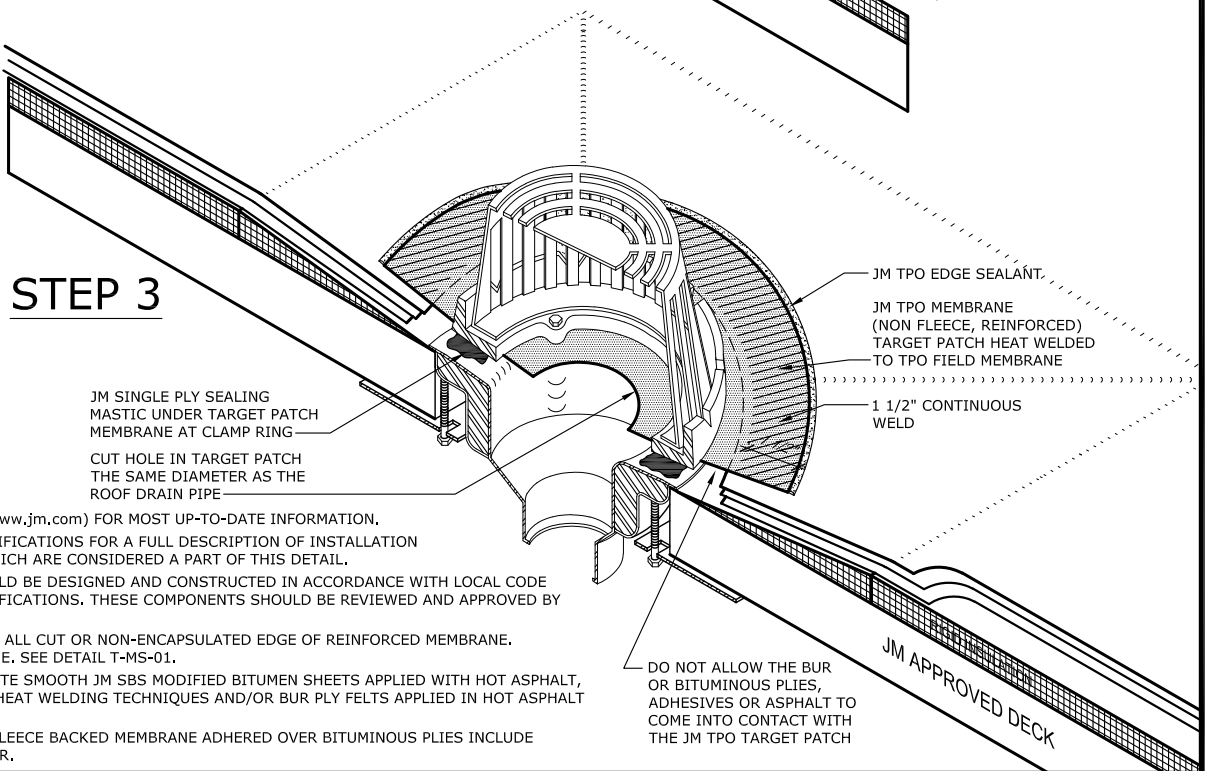
STEP 1



STEP 2



STEP 3



NOTES:

1. REFER TO JOHNS MANVILLE WEBSITE (www.jm.com) FOR MOST UP-TO-DATE INFORMATION.
2. PLEASE SEE SINGLE PLY FLASHING SPECIFICATIONS FOR A FULL DESCRIPTION OF INSTALLATION INSTRUCTIONS AND REQUIREMENTS WHICH ARE CONSIDERED A PART OF THIS DETAIL.
3. ANY CARPENTRY OR METAL WORK SHOULD BE DESIGNED AND CONSTRUCTED IN ACCORDANCE WITH LOCAL CODE REQUIREMENTS AND/OR PROJECT SPECIFICATIONS. THESE COMPONENTS SHOULD BE REVIEWED AND APPROVED BY A LICENSED DESIGN PROFESSIONAL.
4. JM TPO EDGE SEALANT IS REQUIRED ON ALL CUT OR NON-ENCAPSULATED EDGE OF REINFORCED MEMBRANE. THIS INCLUDES FACTORY CUT MEMBRANE. SEE DETAIL T-MS-01.
5. BITUMINOUS PLIES INCLUDE APPROPRIATE SMOOTH JM SBS MODIFIED BITUMEN SHEETS APPLIED WITH HOT ASPHALT, MBR COLD APPLICATION ADHESIVE, OR HEAT WELDING TECHNIQUES AND/OR BUR PLY FELTS APPLIED IN HOT ASPHALT OR COLD APPLICATION ADHESIVE.
6. JM APPROVED ADHESIVES FOR JM TPO FLEECE BACKED MEMBRANE ADHERED OVER BITUMINOUS PLIES INCLUDE HOT ASPHALT, RSUA OR 2P UIA CANISTER.

DO NOT ALLOW THE BUR OR BITUMINOUS PLIES, ADHESIVES OR ASPHALT TO COME INTO CONTACT WITH THE JM TPO TARGET PATCH

DRAWING NO.	
TH-DV-02	
SCALE	ISSUE DATE
N.T.S	03-06-19

DRAIN DETAIL	
MEMBRANE TYPE: JM TPO FLEECE BACK HYBRID	
MAXIMUM GUARANTEE TERM:	

Johns Manville is a manufacturer of commercial roofing products and offers this general conceptual information to you as a courtesy. This complimentary assistance is not to be used or relied upon by anyone as a substitute for professional engineering design and documentation required by building code, contract, or applicable law. By accepting these comments you agree they do not constitute any representations, endorsements of, or an assumption by Johns Manville of any liability for either the adequacy of the design of this building or any other material not supplied by Johns Manville.

