

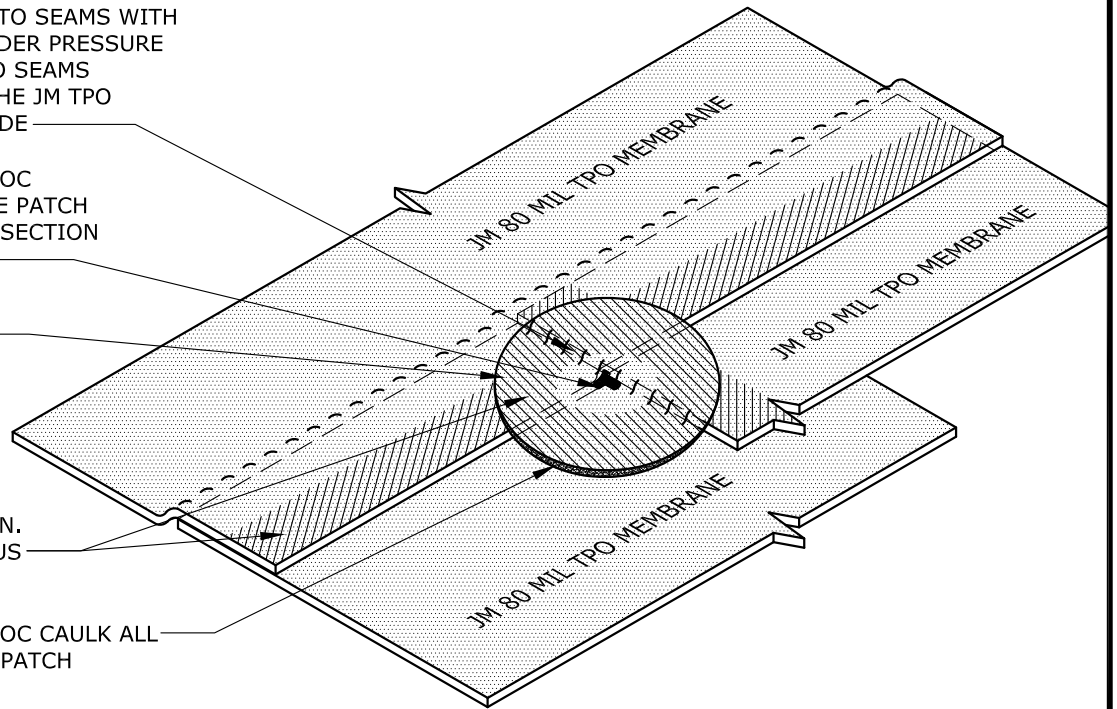
ROLL PATCHES INTO SEAMS WITH  
HAND ROLLER UNDER PRESSURE  
AND CREASE INTO SEAMS  
ACCORDING TO THE JM TPO  
APPLICATION GUIDE

JM SINGLE PLY LVOC  
CAULK UNDER THE PATCH  
AT T-JOINT INTERSECTION  
RECOMMENDED

JM TPO  
T-JOINT PATCH

1 1/2" (38mm) MIN.  
WELD CONTINUOUS

JM SINGLE PLY LVOC CAULK ALL  
AROUND T-JOINT PATCH



**ISOMETRIC VIEW T-JOINT**

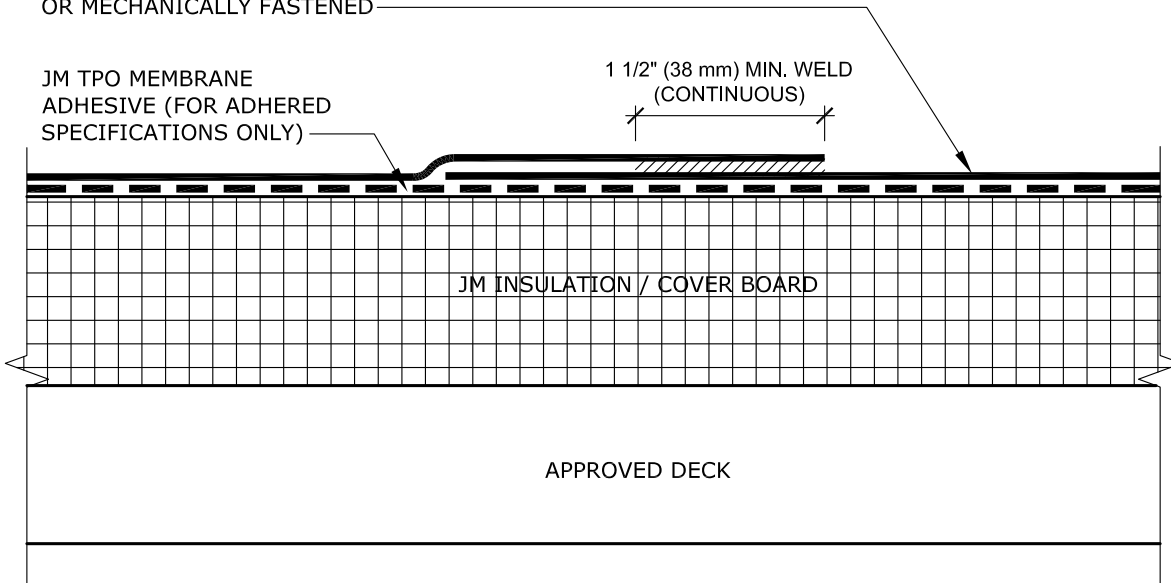
JM TPO MEMBRANE ADHERED  
OR MECHANICALLY FASTENED

JM TPO MEMBRANE  
ADHESIVE (FOR ADHERED  
SPECIFICATIONS ONLY)

1 1/2" (38 mm) MIN. WELD  
(CONTINUOUS)

JM INSULATION / COVER BOARD

APPROVED DECK



**NOTES:**

1. REFER TO JOHNS MANVILLE WEBSITE ([www.jm.com](http://www.jm.com)) FOR MOST UP-TO-DATE INFORMATION.
2. PLEASE SEE SINGLE PLY FLASHING SPECIFICATIONS FOR A FULL DESCRIPTION OF INSTALLATION INSTRUCTIONS AND REQUIREMENTS WHICH ARE CONSIDERED A PART OF THIS DETAIL.
3. ANY CARPENTRY OR METAL WORK SHOULD BE DESIGNED AND CONSTRUCTED IN ACCORDANCE WITH LOCAL CODE REQUIREMENTS AND/OR PROJECT SPECIFICATIONS. THESE COMPONENTS SHOULD BE REVIEWED AND APPROVED BY A LICENSED DESIGN PROFESSIONAL.
4. JM TPO EDGE SEALANT IS REQUIRED ON ALL CUT OR NON-ENCAPSULATED EDGES OF REINFORCED MEMBRANE. THIS INCLUDES FACTORY CUT MEMBRANE (SEE DETAIL T-MS-01).

DRAWING NO.

**T-MS-12**

NEW DETAIL

**TPO T-JOINT PATCH**

MEMBRANE TYPE:  
JM TPO

MAXIMUM GUARANTEE TERM:  
30 YEAR

SCALE  
N.T.S

ISSUE DATE  
1-10-18

Johns Manville is a manufacturer of commercial roofing products and offers this general conceptual information to you as a courtesy. This complimentary assistance is not to be used or relied upon by anyone as a substitute for professional engineering design and documentation required by building code, contract, or applicable law. By accepting these comments you agree they do not constitute any representations, endorsements of, or an assumption by Johns Manville of any liability for either the adequacy of the design of this building or any other material not supplied by Johns Manville.

