

CUT IN REGLET 1" DEEP MIN. PRE-SATURATE EDGE OF JM PMMA SCRIM AND TUCK INTO REGLET. (THIS TECHNIQUE IS OPTIONAL AND IS FOR CONC./MASONRY ONLY. TYPICALLY TERMINATE JM PMMA FLASHING ON WALL SURFACE 8" HIGH.)

APPLY APPROPRIATE SEALANT CONTINUOUS ALONG TOP OF FLASHING (FOR REGLET INSTALLATION ONLY)

ROOF LADDER ANCHORED TO BUILDING (BY OTHERS)

THOROUGHLY CLEAN STEEL AND APPLY JM PMMA METAL PRIMER PRIOR TO INSTALLATION OF JM PMMA MEMBRANE FLASHING

LADDER SUPPORT ANGLES WRAPPED WITH JM PMMA MEMBRANE AND EXTENDED ONTO ROOF MEMBRANE

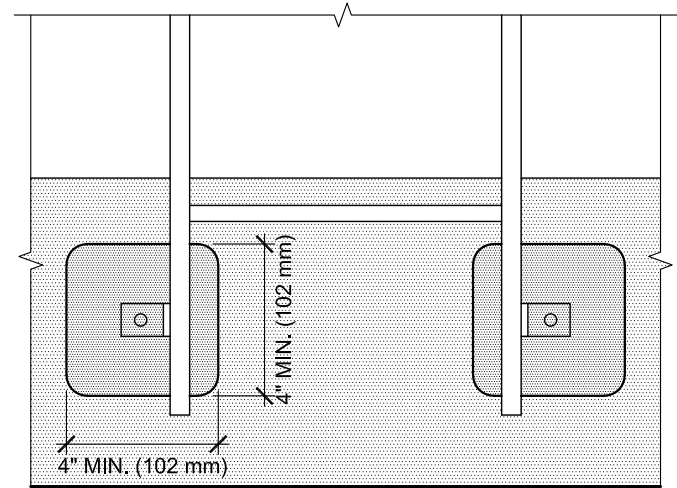
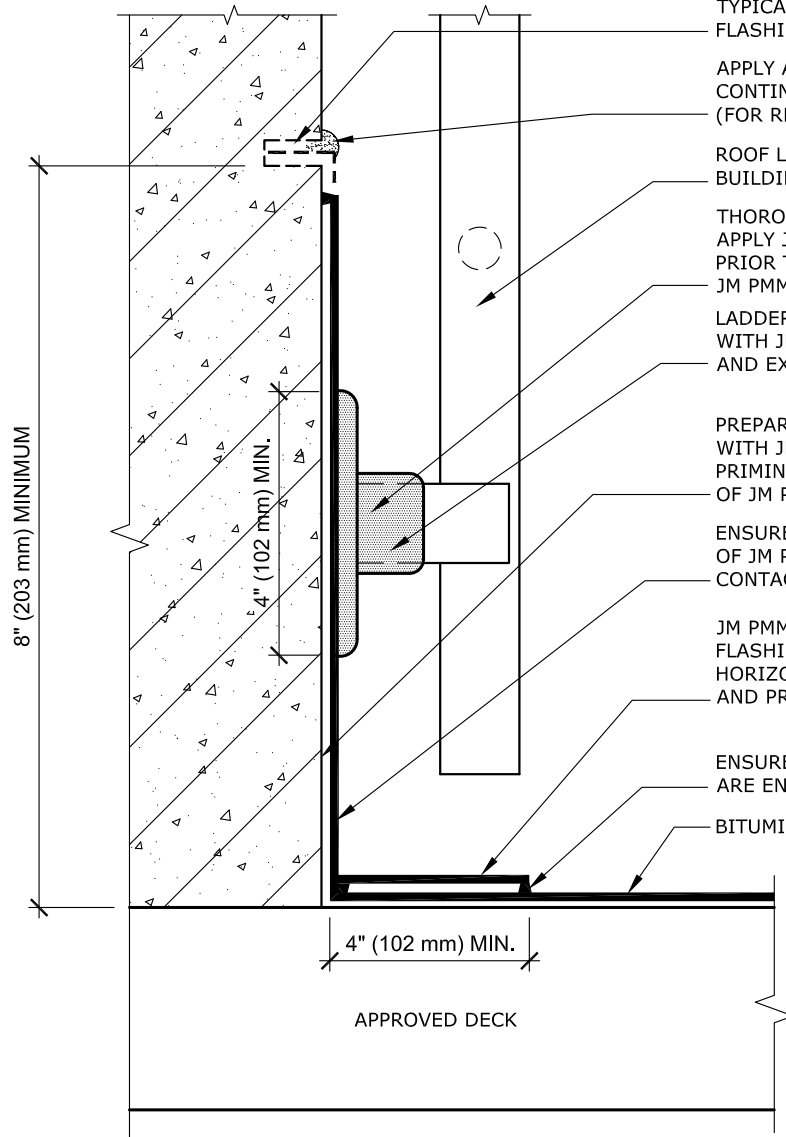
PREPARE, LEVEL & PATCH SUBSTRATE WITH JM PMMA REPAIR PASTE AFTER PRIMING & PRIOR TO INSTALLATION OF JM PMMA MEMBRANE

ENSURE FULL RESIN SATURATION OF JM PMMA SCRIM AND CONTACT WITH SUBSTRATE

JM PMMA MEMBRANE FLASHING EXTENDED 4" MIN. HORIZONTALLY ONTO PREPARED AND PRIMED FIELD MEMBRANE

ENSURE ALL MEMBRANE TERMINATIONS ARE ENCAPSULATED IN JM PMMA RESIN

BITUMINOUS FIELD MEMBRANE



LADDER ELEVATION

NOTES:

1. REFER TO JOHNS MANVILLE WEBSITE (www.jm.com) FOR MOST UP-TO-DATE INFORMATION.
2. PLEASE SEE JM PMMA FLASHING SPECIFICATIONS FOR A FULL DESCRIPTION OF INSTALLATION INSTRUCTIONS AND REQUIREMENTS WHICH ARE CONSIDERED A PART OF THIS DETAIL.
3. ANY CARPENTRY OR METAL WORK SHOULD BE DESIGNED AND CONSTRUCTED IN ACCORDANCE WITH LOCAL CODE REQUIREMENTS AND/OR PROJECT SPECIFICATIONS. THESE COMPONENTS SHOULD BE REVIEWED AND APPROVED BY A LICENSED DESIGN PROFESSIONAL.
4. JM PMMA MEMBRANE FLASHING CONSISTS OF JM PMMA STANDARD RESIN, JM PMMA SCRIM, JM PMMA STANDARD RESIN. USE THE APPROPRIATE JM PMMA PRIMER DEPENDING ON TYPE OF SUBSTRATE.
5. ALL SEALANTS / CAULKING SHALL BE PERIODICALLY INSPECTED AND MAINTAINED BY THE BUILDING OWNER THROUGHOUT THE LIFE OF THE ROOF.

WALL MOUNTED LADDER BASE FLASHING

DRAWING NO.

LB-FW-05

NEW DETAIL

MEMBRANE TYPE:

JM PMMA OVER BITUMINOUS

MAXIMUM GUARANTEE TERM:

20 YEAR

ISSUE DATE

6-18-18

SCALE

N.T.S

Johns Manville is a manufacturer of commercial roofing products and offers this general conceptual information to you as a courtesy. This complimentary assistance is not to be used or relied upon by anyone as a substitute for professional engineering design and documentation required by building code, contract, or applicable law. By accepting these comments you agree they do not constitute any representations, endorsements of, or an assumption by Johns Manville of any liability for either the adequacy of the design of this building or any other material not supplied by Johns Manville.

