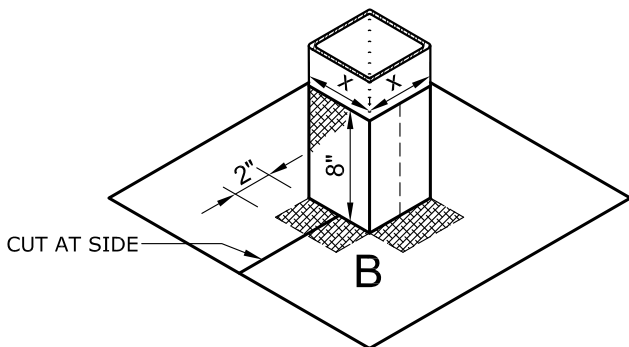
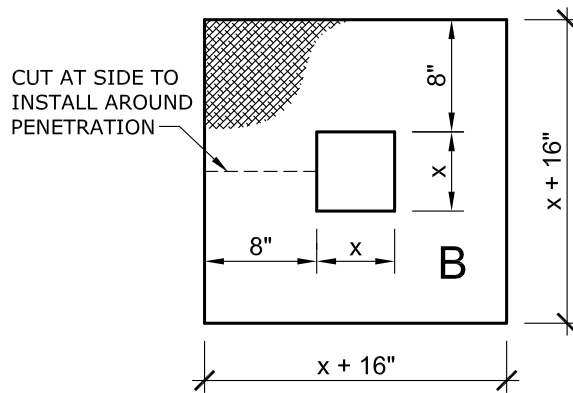


## A VERTICAL SURFACES STEP A



## HALF SCALE



## B HORIZONTAL SURFACE STEP B

### NOTES:

- A. USE SCRIM LAYOUT IN CONJUNCTION WITH THE PERMAFLASH SQUARE METAL TUBE DETAIL DRAWING, PMF-11.
- B. ALL FOLD LINES REPRESENTED AS .....  
ALL CUT LINES REPRESENTED AS - - - - -
- C. AN EXTRA COAT OF MBR FLASHING CEMENT MUST BE PLACED BETWEEN SCRIM LAYERS WHERE THEY OVERLAP TO ENSURE A PROPER BOND.

DRAWING NO.

**PMF-11S**

**PERMAFLASH SQUARE METAL TUBE SCRIM DETAIL**

MEMBRANE TYPE:  
PERMAFLASH

MAXIMUM GUARANTEE TERM:

SCALE  
N.T.S

ISSUE DATE  
12-07-18

Johns Manville is a manufacturer of commercial roofing products and offers this general conceptual information to you as a courtesy. This complimentary assistance is not to be used or relied upon by anyone as a substitute for professional engineering design and documentation required by building code, contract, or applicable law. By accepting these comments you agree they do not constitute any representations, endorsements of, or an assumption by Johns Manville of any liability for either the adequacy of the design of this building or any other material not supplied by Johns Manville.

