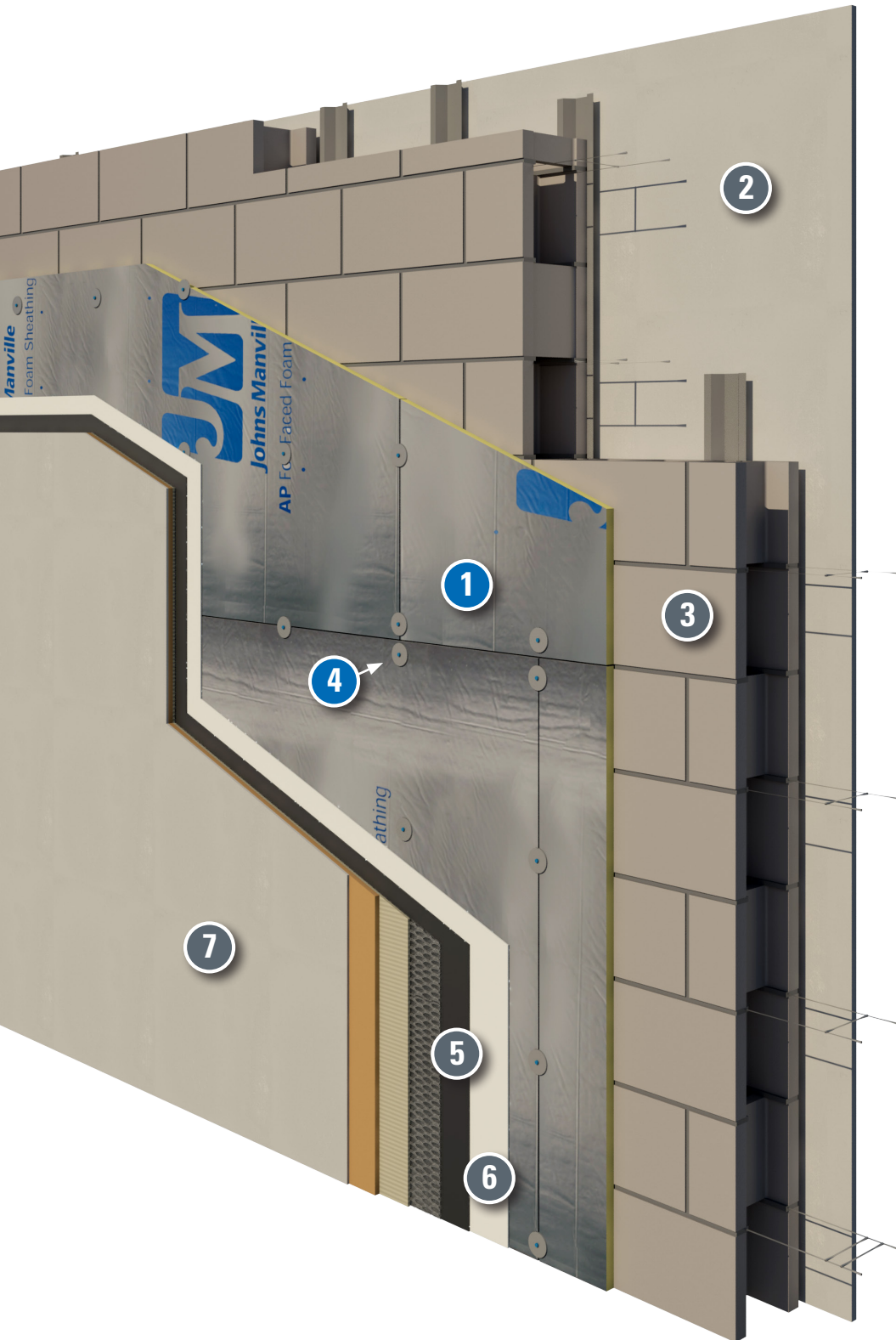


# JM AP™ Foil-Faced Foam Sheathing

## Continuous Insulation for Stucco Wall Systems



- 1 JM AP™ Foil-Faced Foam Sheathing<sup>1</sup>
- 2 Interior Wall Board
- 3 Concrete, concrete masonry unit, steel stud or wood
- 4 JM Recommended Plates and Fasteners<sup>2</sup>
- 5 Independent Air and Water-Resistive Barrier
- 6 Independent Air and Water-Resistive Barrier
- 7 Typical 3-Coat Stucco System

<sup>1</sup> Insulation materials available from JM.

<sup>2</sup> Attachment method may vary depending on wall assembly components and local building code requirements.

Wall assembly is for reference only and not to be used as a substitute for professional engineering design and documentation required by building code, contract, or applicable laws.