

COMPANY

Johns Manville, a Berkshire Hathaway company, was founded in 1858. Our ownership by Berkshire Hathaway, one of the most admired companies in the world and one of the most financially secure, allows JM to invest for the future. This enables JM to continue delivering the broadest range of insulation products in the industry and offering innovative solutions that meet your needs.

DESCRIPTION

MinWool® Curtainwall 40 Insulation is made of inorganic fibers derived from basalt, a volcanic rock. Advanced manufacturing technology ensures consistent product quality, with high-fiber density and low shot content for excellent performance. MinWool Curtainwall 40 is available in plain or faced with a (FSP) Scrim Reinforced Foil Facing vapor retarder on one face. MinWool Curtainwall 40 is inorganic, noncombustible, moisture resistant, non-deteriorating, and will not mildew or support corrosion.

USE

MinWool Curtainwall 40 is designed to provide superior fire resistance and thermal properties in glass, metal, and masonry curtainwall spandrel systems. The board can be placed between or over framing members, and held in place with mechanical fasteners.

INSTALLATION

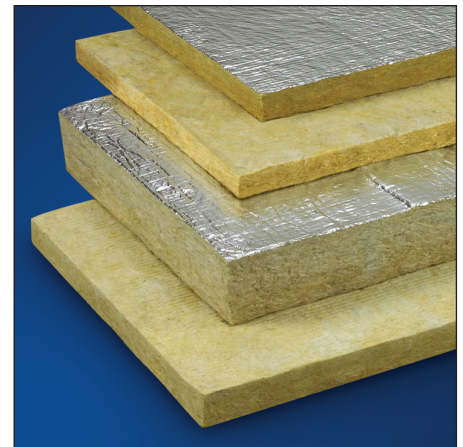
MinWool Curtainwall 40 is easy to install. It is easily cut with a utility knife for convenient jobsite fabrication. A wide range of thicknesses facilitates optimum material usage.

PACKAGING

MinWool Curtainwall 40 is packaged in poly shrink wrap.

DESIGN CONSIDERATIONS

MinWool Curtainwall 40 may also be used in fire-rated wall assemblies as required by the building code. A fire suppression system may also be needed in conjunction with good construction practices to provide adequate fire protection for the building. The need for and the placement of a vapor retarder in commercial construction depends on many factors. The architect or specifier should evaluate the requirements for each project. Two-hour and three-hour fire-rated assemblies are listed in the UL Fire Resistance Directory.



PERFORMANCE ADVANTAGES

Excellent Acoustical Performance:

Lightweight, flexible insulation batts are excellent sound absorbers, efficiently reducing sound transmission.

Fire Safety: MinWool Curtainwall 40 has a melting point in excess of 2000°F (1093°C). See Applicable Standards for details.

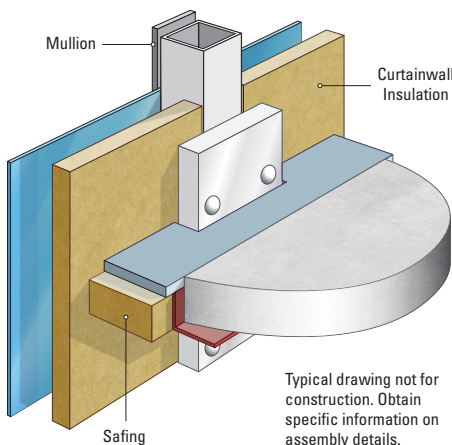
Noncombustible: See Applicable Standards for details.

Durable & Inorganic: MinWool Curtainwall 40 does not support growth of fungi, nor does it sustain vermin.

ENERGY AND ENVIRONMENT



Typical Perimeter Fire Containment Joint



**GREENGUARD certification is not intended for residential environments. Instead, the certification is intended only for buildings meeting ASHRAE 62.1-2007 commercial building ventilation rates. This certification is proof that the product meets the GREENGUARD Environmental Institute's indoor air quality standards and product emission standards for VOCs.*

LIMITATIONS OF USE

Check applicable building codes.

APPLICABLE STANDARDS & BUILDING APPLICATION*

| MINWOOL CURTAINWALL 40 |
|---|
| ASTM C612 Classification Type I-IVa |
| ASTM C665 Corrosivity to Steel, Passes |
| ASTM C1104 Water Vapor Sorption, <1% By Weight; <.02% by Volume at 120°F (49°C), 95% RH |
| ASTM C1338 Fungi Resistant, Passes |
| ASTM E84 Flame Spread/Smoke Developed, Unfaced 0/0, Faced 25/5 or less |
| ASTM E96 FSP Facing Permeability, 0.02 Perms, Maximum |
| ASTM E136 Noncombustible, Passes |
| UL 723, CAN/ULC-S102, Unfaced 0/0 |
| CAN4-S114-M, Passes |
| City of New York, MEA-346-90 |
| ICC (International Building Code), All Building Classification Types |

***DISCLAIMER:** JM products are designed, manufactured and tested to strict quality standards in our own facilities. This, along with third-party auditing, is your assurance that this product delivers consistent high quality.

STANDARD SIZES

| PRODUCT | DENSITY ASTM C612 | | | | | | THICKNESS* | |
|------------|--------------------------|--------------------------|------------------------------|------------------------|----------|-----------|----------------|----------|
| | NOMINAL | ACTUAL | R-VALUE/inch | RSI-VALUE/25mm | WIDTH | LENGTH | UNFACED | FACED |
| | pcf (kg/m ³) | pcf (kg/m ³) | (hr·ft ² ·°F/Btu) | (°K·m ² /W) | in (mm) | in (mm) | in (mm) | in (mm) |
| CW4 | 4.0 (64) | 3.0 (48) | 4.0 | 0.70 | 24 (610) | 48 (1219) | 1.5–4 (38–102) | >3 (>76) |

*Thickness range available in ½" (13mm) increments. Custom lengths, widths and thicknesses are also available. R-value is determined in accordance with C518.

ACOUSTICAL PERFORMANCE

ASTM C423 Test Method

| PRODUCT | THICKNESS | SOUND ABSORPTION COEFFICIENTS | | | | | | |
|------------|-----------|--|------|------|------|------|------|------|
| | | 1/3 Octave Band Center Frequencies, Hz | | | | | | |
| | in (mm) | 125 | 250 | 500 | 1000 | 2000 | 4000 | NRC |
| CW4 | 1½ (40) | 0.13 | 0.48 | 1.02 | 1.08 | 1.02 | 1.01 | 0.90 |
| | 2 (50) | 0.20 | 0.61 | 1.07 | 1.06 | 1.04 | 1.07 | 0.95 |
| | 4 (100) | 0.88 | 1.14 | 1.17 | 1.08 | 1.06 | 1.10 | 1.10 |
| | 6 (150) | 1.32 | 1.14 | 1.11 | 1.09 | 1.06 | 1.07 | 1.10 |