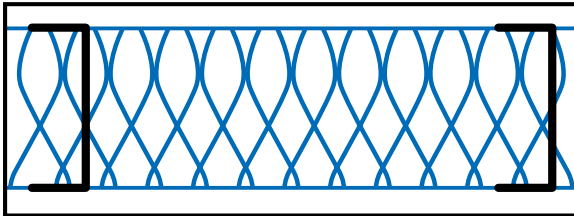
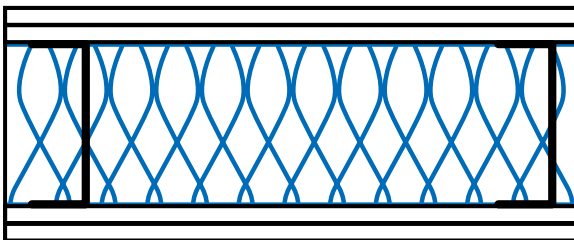


Mineral Wool STC Typical Sound Barrier Assemblies



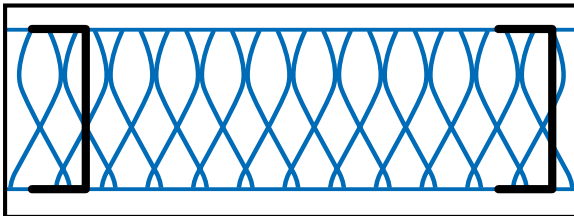
STC 42: Single layer of 1/2" (13 mm) gypsum drywall on each side of 2 1/2" (64 mm) steel stud with 2" (51 mm) MinWool SAFB

STC 43: Single layer of 5/8" (16 mm) gypsum drywall on each side of 2 1/2" (64 mm) steel stud with 2" (51 mm) MinWool SAFB



STC 49: Double layer of 1/2" (13 mm) gypsum drywall on each side of 2 1/2" (64 mm) steel stud with 2" (51 mm) MinWool SAFB

STC 51: Double layer of 5/8" (16 mm) gypsum drywall on each side of 2 1/2" (64 mm) steel stud with 2" (51 mm) MinWool SAFB

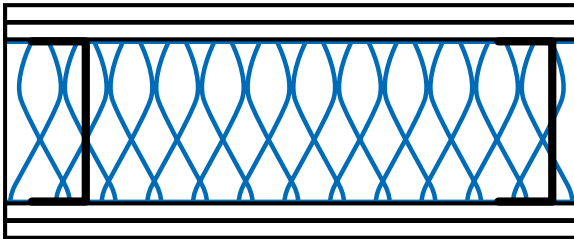


STC 48: Single layer of 1/2" (13 mm) gypsum drywall on each side of 3 5/8" (92 mm) steel stud with 2" (51 mm) MinWool SAFB

STC 51: Single layer of 1/2" (13 mm) gypsum drywall on each side of 3 5/8" (92 mm) steel stud with 3" (76 mm) MinWool SAFB

STC 49: Single layer of 5/8" (16 mm) gypsum drywall on each side of 3 5/8" (92 mm) steel stud with 2" (51 mm) MinWool SAFB

STC 51: Single layer of 5/8" (16 mm) gypsum drywall on each side of 3 5/8" (92 mm) steel stud with 3" (76 mm) MinWool SAFB



STC 52: Double layer of 1/2" (13 mm) gypsum drywall on each side of 3 5/8" (92 mm) steel stud with 2" (51 mm) MinWool SAFB

STC 54: Double layer of 1/2" (13 mm) gypsum drywall on each side of 3 5/8" (92 mm) steel stud with 3" (76 mm) MinWool SAFB

STC 54: Double layer of 5/8" (16 mm) gypsum drywall on each side of 3 5/8" (92 mm) steel stud with 2" (51 mm) MinWool SAFB

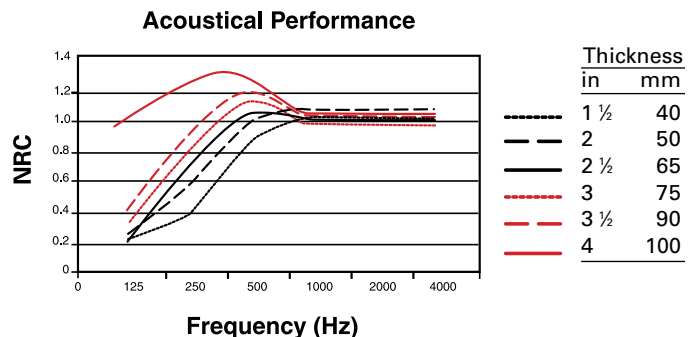
STC 55: Double layer of 5/8" (16 mm) gypsum drywall on each side of 3 5/8" (92 mm) steel stud with 3" (76 mm) MinWool SAFB

Note: All assemblies use a stud gauge of 25 gauge and stud spacing of 24" o.c.

SAFB ACOUSTICAL PERFORMANCE

Sound Absorption Coefficients

Thickness		1/3 Octave Band Center Frequencies, Hz						
(in)	(mm)	125	250	500	1000	2000	4000	NRC
1 1/2	40	0.23	0.42	0.89	1.03	1.03	1.03	0.85
2	50	0.27	0.55	1.07	1.10	1.10	1.10	0.95
2 1/2	65	0.25	0.77	1.10	1.04	0.98	0.98	1.00
3	75	0.34	0.92	1.16	1.04	0.98	0.98	1.05
3 1/2	90	0.41	1.01	1.20	1.06	1.06	1.05	1.10
4	100	0.97	1.28	1.25	1.10	1.10	1.09	1.20



Mineral Wool STC Typical Sound Barrier Assemblies

Curtainwall Acoustical Performances									
Sound Absorption Coefficients									
Thickness			1/3 Octave Band Center Frequencies, Hz						
Type	(in)	(mm)	125	250	500	1000	2000	4000	NRC
CW 4	1 ½	40	0.13	0.48	1.02	1.08	1.02	1.01	0.90
	2	50	0.20	0.61	1.07	1.06	1.04	1.07	0.95
	4	100	0.88	1.14	1.17	1.08	1.06	1.10	1.10
	6	150	1.32	1.14	1.11	1.09	1.06	1.07	1.10
CW 6	1 ½	40	0.18	0.62	1.08	1.08	1.03	1.07	0.95
	2	50	0.25	0.85	1.15	1.10	1.04	1.06	1.05
	3	75	0.80	1.07	1.11	0.99	0.98	0.96	1.05
	4	100	0.99	1.01	1.10	1.03	1.03	1.05	1.05
CW 8	1 ½	40	0.13	0.64	1.08	1.04	1.04	1.07	0.95
	2	50	0.32	0.90	1.11	1.01	1.01	1.05	1.00
	4	100	1.11	0.91	1.03	1.06	1.06	1.07	1.00

PRODUCT CERTIFICATION

When ordering material to comply with any government specification or any other listed specification, a statement of that fact must appear on the purchase order. Government regulations and other listed specifications require specific lot testing, and prohibit the certification of compliance after shipment has been made. There may be additional charges associated with specification compliance testing. Please refer to IIG-CSP-3 for Certification Procedures and Charges. Call customer service for more information.

Industrial Insulation Group, LLC is a Johns Manville company. IIG manufactures MinWool mineral fiber pipe, block and a variety of other insulations; Thermo-12® Gold Calcium Silicate pipe and block insulation; Super Firetemp® fireproofing board; SprouleWR-1200® Perlite pipe and block insulation; high temperature adhesives, and insulating finishing cement.

QUALITY STATEMENT

IIG Products are designed, manufactured and tested to strict quality standards in our own facilities. This along with third party auditing is your assurance that this product delivers consistent high quality.



The **GREENGUARD INDOOR AIR QUALITY CERTIFIED®** Mark is a registered certification mark used under license through the GREENGUARD Environmental Institute.