

## AP™ Foil-Faced

### Polyisocyanurate Foam Sheathing



#### PRODUCT DESCRIPTION

Johns Manville AP Foil-faced sheathing board is composed of a uniform closed cell polyisocyanurate foam core bonded on each side to a trilaminate foil facer. One side has a foil reflective facer and the other side has a non-reflective foil facer, depending on your building needs.

AP is now produced with a non-HCFC blowing agent, meeting the latest environmental regulations for using chemicals that do not harm the protective ozone layer in the earth's atmosphere. The new formula enhances the positive environmental profile for this energy-saving product.

#### APPLICATIONS

##### New Construction

- Interior insulation behind gypsum
- Behind all siding types, including brick veneer and exterior stucco
- Masonry cavity wall insulation
- Thermal insulation under reinforced slab
- Cathedral ceilings

##### Retrofit

- Insulation underlayment levelling board for re-siding

#### STORAGE

Store AP sheathing flat on pallets elevated above the floor or ground and standing water. If stored outdoors, keep dry by covering completely with a waterproof tarpaulin.

#### SPECIFICATION COMPLIANCE\*

Meets CAN/CGSB 51.26-M86, Type 1, Facing 2

CCMC Listing #12477-L, 12671-L

ASTM C 1289, Type I, Class 1

ASTM D 1621 Compressive Strength, 20 psi (138 kPa)

ASTM D 2126 Dimensional Stability, 2% max, 7 days (length and width)

ASTM E 96 Moisture Vapour Transmission, < 0.03 Perms (1.5 ng/(Pa·s·m<sup>2</sup>))

Service Temperature: -100°F to 250°F (-73°C to 122°C)

CAN/ULC-S102-M88 Flame Spread Classification of less than 500

\*Technical specifications as shown in this literature are intended to be used as general guidelines only. Long Form Specifications available on request. Call Johns Manville at 1-800-661-9553 for technical assistance, detailed specifications, literature and samples.

#### SHORT FORM SPECIFICATION

All insulation shown on drawings or specified herein shall be "AP Foil-faced Polyisocyanurate Foam Sheathing" as manufactured by Johns Manville. Thermal resistance "R" (RSI) values of the insulation shall be R (RSI) \_\_\_\_\_ in walls.

#### LIMITATIONS OF USE

Check applicable building codes. As with all foam plastics, this product will burn. Johns Manville AP sheathing products must be protected from open flame and kept dry at all times. Do not leave exposed. AP sheathing requires an interior finish of a minimum 1/2" (13 mm) gypsum board or equivalent 15-minute fire barrier. AP sheathing is a non-structural product; use acceptable corner bracing. Check local building code for specific requirements.

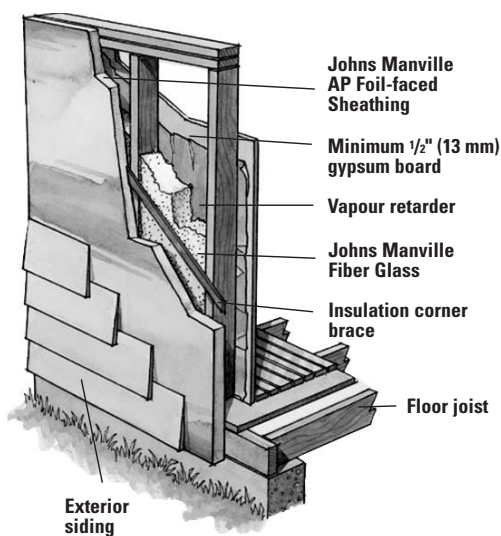
#### PERFORMANCE ADVANTAGES

- Thermal Efficiency – provides effective resistance to heat transfer with R-values up to R-21 (RSI-3.7). It reduces thermal bridging at the framing members where fiber glass batts don't insulate, improving the overall thermal efficiency of walls.
- Non-corrosive – does not accelerate corrosion of pipes, wiring or metal studs.
- Durable – it will not rot, mildew or otherwise deteriorate.
- Lightweight – easy to handle, can be cut with a utility knife or saw.

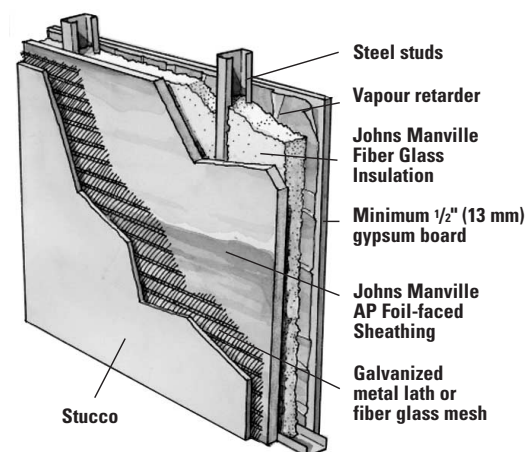
### EXTERIOR INSTALLATION

Corner bracing is necessary when building with non-structural sheathing. Secure boards with  $\frac{3}{8}$ " (10 mm) head diameter galvanized roofing nails long enough to penetrate the stud at least  $\frac{3}{4}$ " (19 mm), or use 1" (25 mm) crown 16 gauge staples with leg length sufficient to penetrate framing  $\frac{1}{2}$ " (13 mm). Fasten boards to framing every 8" (203 mm) horizontally and every 12" (305 mm) vertically. Wood, hardboard, vinyl or aluminum siding can be installed over AP in accordance with siding manufacturers' instructions. Adhere wire mesh for stucco finishes over AP by nailing to the studs. Industry practice restricts the thickness of foam sheathing under conventional stucco to  $1\frac{1}{2}$ " (38 mm) maximum due to the potential for nail deflection.

### Exterior Application



### Exterior Stucco System



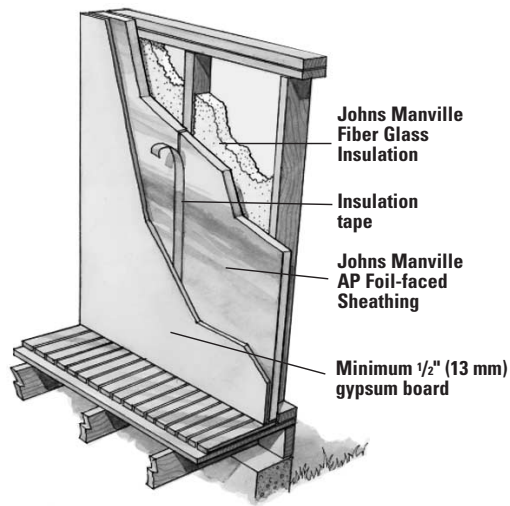
### INTERIOR INSTALLATION

When used as an underlayment, AP sheathing is easily attached to the interior stud surface, and should always be covered with a minimum 1/2" (13 mm) gypsum board. Apply vapour retarder tape to all joints when a vapour retarder is required. Consult your local building department for code requirements on vapour retarders.

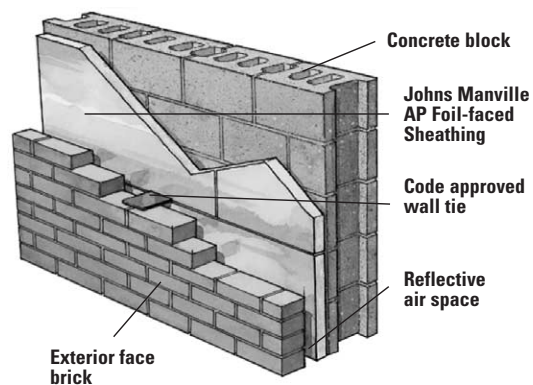
### Cavity Wall Installation

Install 15 3/4" (400 mm) or 24" (610 mm) AP horizontally between the concrete block wall and the exterior masonry. Attach insulation panels against the inner wall using mechanical fasteners or construction-grade adhesive with wall ties at the insulation joints. AP may be installed directly to oil-based waterproofing compounds.

### Interior Application



### Cavity Wall Construction



# AP™ Foil-Faced

## Polyisocyanurate Foam Sheathing

Visit our website at [www.jm.com](http://www.jm.com)  
Or call: 1-800-661-9553

### AVAILABLE FORMS\*

Specification Compliance	R-value (hr.ft <sup>2</sup> .°F/Btu)	RSI-value (m <sup>2</sup> .°K/Watts)	Thickness		Width**	
			(in)	(mm)	(ft)	(mm)
CAN/CSGB 51.26-M86, Type 1, Facing 2	3.0	0.53	½	13	4	1200
AP Foil-faced	3.8	0.67	¾	16	4	1200
Polyisocyanurate	4.5	0.79	¾	19	4	1200
Foam Sheathing	6.0	1.05	1	25	4	1200
	9.0	1.59	1½	38	4	1200
	12.0	2.11	2	51	4	1200
	15.0	2.64	2½	64	4	1200
	18.0	3.17	3	76	4	1200
	21.0	3.70	3½	89	4	1200

\*R-value (RSI-value) as recommended by CCMC for design purposes.

\*\*Upon special request, JM will provide boards cut to 16" (406 mm) or 24" (610 mm) widths for easy application in cavity walls. Standard product lengths include 8' (2440 mm) and 9' (2740 mm).

Technical specifications as shown in this literature are intended to be used as general guidelines only. The physical and chemical properties of AP foil-faced polyisocyanurate foam sheathing listed herein represent typical, average values obtained in accordance with accepted test methods and are subject to normal manufacturing variations. They are supplied as a technical service and are subject to change without notice. Any references to numerical flame spread or smoke developed ratings are not intended to reflect hazards presented by these or any other materials under actual fire conditions. Check with the sales office nearest you for current information. All Johns Manville products are sold subject to Johns Manville's Limited Warranty and Limitation of Remedy. For a copy of the Johns Manville Limited Warranty and Limitation of Remedy or for information on other Johns Manville thermal and acoustical insulation and systems, call or write to the 800 number or address listed below.



Distributed by:

### Johns Manville Canada Inc. Building Insulation Division

4704 58th Street  
Innisfail, AB T4G 1A2  
1-800-661-9553  
[www.jm.com](http://www.jm.com)