

## MINWOOL-1200® PREFORMED PIPE INSULATION

MinWool-1200 Preformed (PF) pipe insulation is made of inorganic fibers derived from basalt, a volcanic rock, with thermosetting resin binder. Advanced manufacturing technology ensures consistent product quality, with high fiber density and low shot content, for excellent performance in thermal control and fire resistance applications. PF pipe insulation is a factory "V" grooved mineral wool board formed to specific pipe sizes and provided in half cylinder sections with a variety of facing options.

### ADVANTAGES

**Thermal Performance.** Good thermal conductivity values help maximize control of heat loss, contributing to reduced operating costs and greater energy savings.

**Light Weight, Low Dust, Protected Outer Surface.** Easy to handle and fabricate, Lamella Tank Wrap insulation is easy to cut with a knife. Clean handling properties and factory applied facers help reduce skin irritation and minimize job cleanup time and expense.

**Mold Resistant.** MinWool-1200 PF pipe insulation does not support the growth of fungi.

### APPLICATIONS

MinWool-1200 Preformed pipe insulation is produced to fit NPS & tubing sizes for commercial and industrial applications at temperatures ranging from ambient to 1200°F (650°C). This formed pipe insulation is easily fabricated, cutting cleanly and easily with a knife. Very low in-service shrinkage helps prevent gaps from forming at joints, preventing costly thermal leaks. The insulation is designed to be factory or field jacketed. It may be installed directly on hot surfaces; system shutdown and staged heat-up are not required.

### AVAILABLE FORMS AND SIZES

#### Standard Thicknesses

Single Layer- 1" thick up to 4" thick

Double Layer- Over 4" thick in ½" increments

Sizes range from ½" to 36" pipe sizes

Available in iron and copper tubing sizes

#### Sectional

– Pipe Diameter ½"-2 ½" in thicknesses 1" to 4"

– Pipe Diameter 3" - 4" in thickness of 1"

#### VGroove

– Pipe Diameter 3" - 4" in thicknesses 2" - 4"

– Pipe Diameter 5" to 36" in thicknesses 1" - 4"

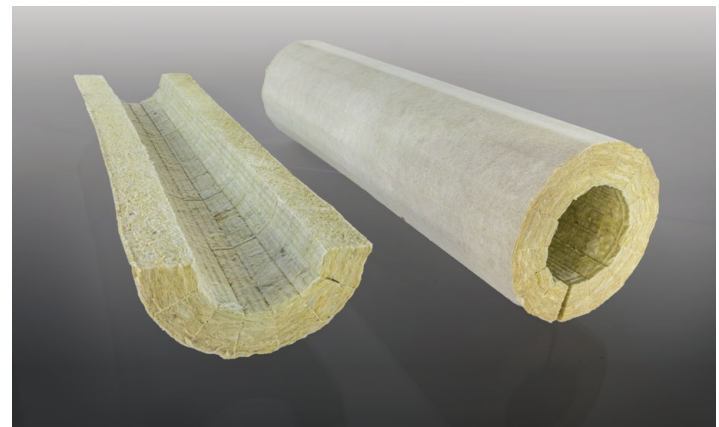
#### Facings Available

No facing offered on pipe sizes ½" through 2 ½"

For 1" Thickness, no facing on ½" through 4" pipe sizes

Standard is fiberglass mat

Available with ASJ/SSL (self sealing lap)



Operating Temperature Limit: 1200°F (650°C)

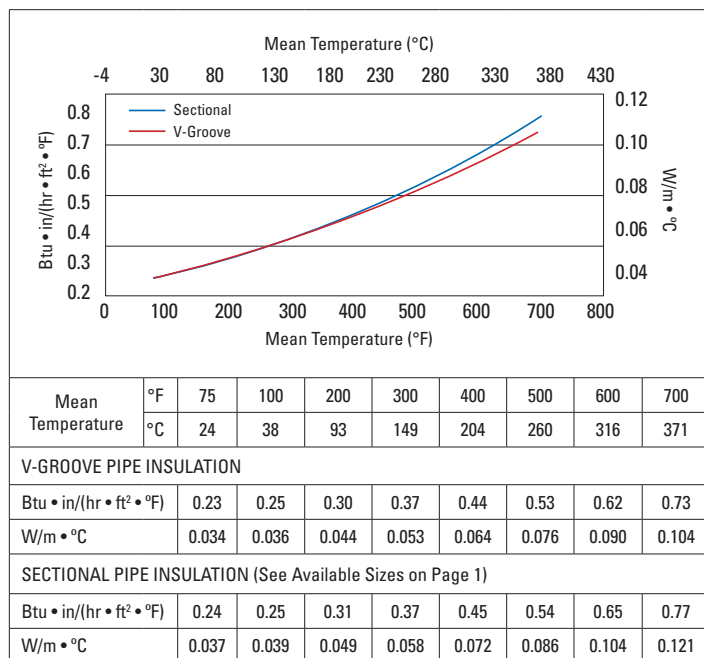
### LINEAR SHRINKAGE AFTER 24 HRS. AT TEMPERATURE

Temperature		Shrinkage
°F	°C	(%)
1050	566	0
1200	649	<2

### SPECIFICATION COMPLIANCE

ASTM C447 Maximum Service Temperature	1200°F (650°C)
ASTM C547, Type III	Complies
ASTM C585 Dimensions of Pipe Insulation	Passes
ASTM C1335 Shot Content	<25%
ASTM E84 Surface Burning Characteristics	Flame Spread - 25 Smoke Developed - 50 or less
Recovery after 10% Compression	100%

## THERMAL CONDUCTIVITY



\* MinWool-1200 Lamella Tank Wrap Insulation as tested in accordance with ASTM C518.

## PRODUCT CERTIFICATION

When ordering material to comply with any government specification or any other listed specification, a statement of that fact must appear on the purchase order. Government regulations and other listed specifications require specific lot testing, and prohibit the certification of compliance after shipment has been made. There may be additional charges associated with specification compliance testing. Please refer to IND-CSP-3 for Certification Procedures and Charges. Call customer service for more information.

## QUALITY STATEMENT

Industrial Insulation Group products are designed, manufactured and tested to strict quality standards in our own facilities. This along with third party auditing is your assurance that this product delivers consistent high quality.

## ADDITIONAL INFORMATION AND SDS

Please visit our website at [www.jm.com/industrial](http://www.jm.com/industrial)  
Customer Service, Technical & General Information: (800) 866-3234



717 17th St.  
Denver, CO 80202  
(800) 866-3234  
JM.com

Technical specifications as shown in this literature are intended to be used as general guidelines only. Please refer to the Safety Data Sheet and product label prior to using this product. The physical and chemical properties of the MinWool-1200® Preformed Pipe Insulation listed herein represent typical, average values obtained in accordance with accepted test methods and are subject to normal manufacturing variations. They are supplied as a technical service and are subject to change without notice. Any references to numerical flame spread or smoke developed ratings are not intended to reflect hazards presented by these or any other materials under actual fire conditions. Check with the Regional Sales Office nearest you for current information.

**All Johns Manville products are sold subject to Johns Manville's standard Terms and Conditions, which includes a Limited Warranty and Limitation of Remedy. For a copy of the Johns Manville standard Terms and Conditions or for information on other Johns Manville thermal insulation and systems, visit [www.jm.com/terms-conditions](http://www.jm.com/terms-conditions) or call (800) 654-3103.**