

StarRov® 886 RXN

Product description:

StarRov® 886 RXN direct roving is manufactured by direct winding of continuous glass fibers of defined diameter into a cylindrical roving package. It is characterized by a pioneering reactive sizing designed for Structural Thermoplastic Composites with polyamide engineering polymers.

The JM proprietary sizing chemistry renders the glass surface reactive and enables in-situ polymerization from glass. It maximizes glass-matrix bonding which leads to improved strength, impact, aged and dimensional stability performance.

Rovings with Reactive (RXN) 886 sizing are designed to be used mainly as an input for TP-RTM, TP-RIM, TP-pultrusion, and TP-filament winding processes with polyamide resins. The majority of the applications targeted are in the automotive market where strength to weight ratio is important.

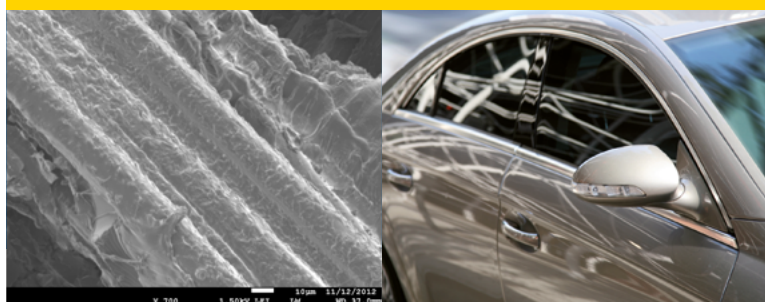
Resin compatibility:

- Polyamide resins

Designation: Glass type is E-Glass

Benefits:

- Enables in-situ polymerization with higher strength performance
- Maximizes glass-matrix bonding
- Improving strength (ILSS)
- Improved impact properties
- Suitable for a variety of processes, including TP-RTM, TP-RIM, TP-pultrusion, and TP-filament winding
- Possible one-pot system simplified processing – no issues with curing in mixing head or tubing
- Low cost thermoplastic with the potential of greatly improved property profile
- End of life recyclability
- European products are manufactured in compliance with ISO 9001 standards



SEM picture indicating excellent matrix-glass bonding in PA6 system

JM Designation	Region	Filament diameter (µm)	LOI content (%)	Linear density Tex (g/km)
StarRov® 886 1200 RXN	EU	16	0.3	1200
StarRov® 886 2400 RXN	EU	16	0.3	2400

Bobbin dimensions:

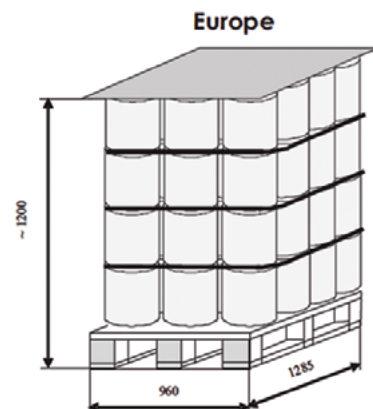
Region	Typical weight (kg)	Inner diameter (mm)	Outer diameter (mm)	Height (mm)
EU	19-20	160	300	260

Packaging:

Region	Packaging wrap	Pallet dimensions (mm)	Net weight per pallet (kg)	Bobbins per pallet
EU	Stretch foil	1285 x 960 x 1200	920	48

Storage:

These products should be stored in original packaging in dry, roofed, dust free storehouses. The recommended temperature is between 10°C to 30°C (50°F to 86°F) at relative air humidity between 50% to 75%. The products should remain in the original packaging and be conditioned in the work area for a minimum of 24 hours prior to use. The pallets should be single stacked unless otherwise specified on the packaging unit.

**Values:**

All data represent typical average values.

Warranty disclaimer :

The physical (or chemical) properties of Johns Manville products represent typical average values obtained in accordance with accepted test methods at the time of manufacture and are subject to normal manufacturing variations. They are supplied as a technical service and are subject to change without notice. Check the Johns Manville office to assure current information. For a copy of the Johns Manville Limited Warranty and Limitation of Remedy or other product information, contact your local Sales Representative.

**US Headquarters**

Johns Manville
717 17th Street
Denver, CO 80202 - USA
Phone: +1 (303) 978 2000

Customer-Service-Offices:

North America
Johns Manville
7500 Dutch Road
Waterville, OH 43566 - USA
Phone: +1 (800) 554 4826
Fax: +1 (419) 878 1538

Europe

Johns Manville Slovakia, a.s.
Strojárska 1
91799 Trnava - Slovakia
Phone: +421 (0) 33 5918 249
Contact: fibers@jm.com

www.jm.com