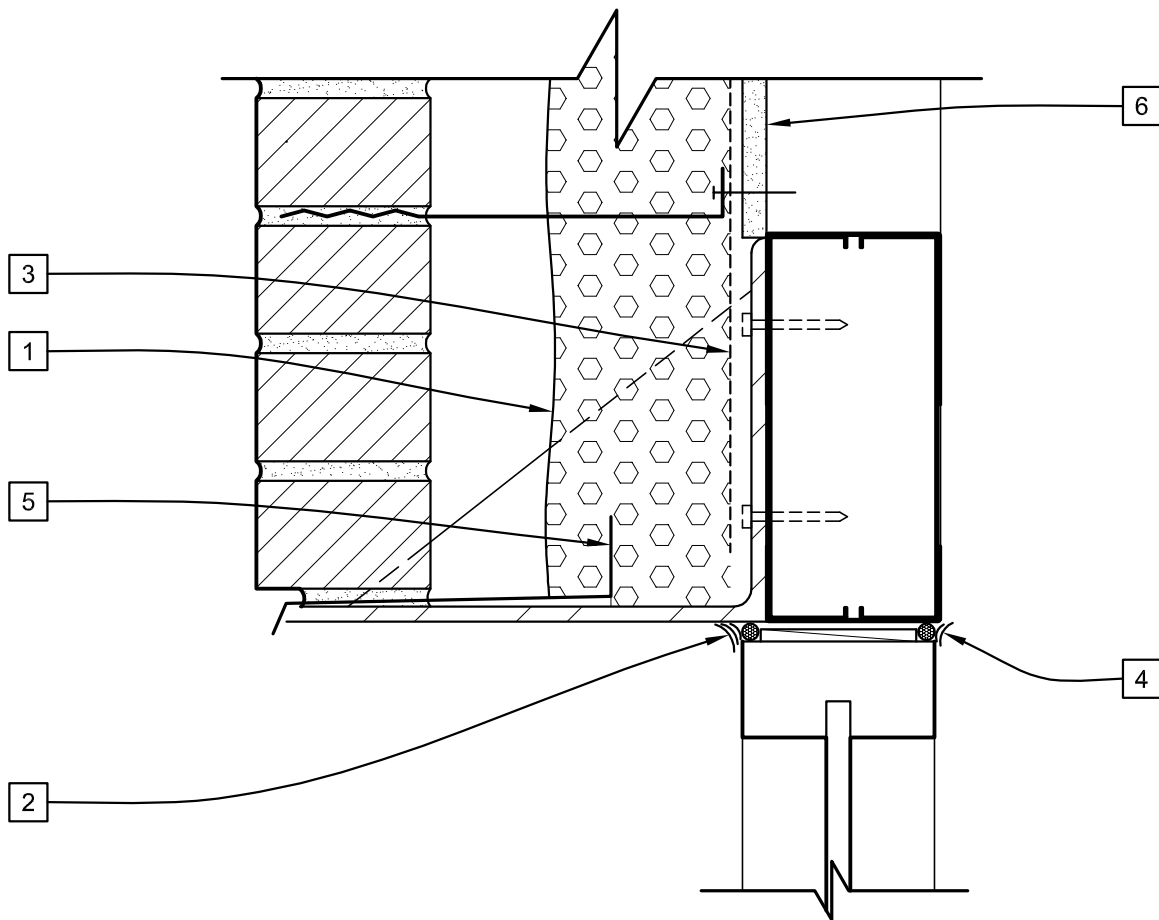


LEGEND

- 1 JM CORBOND III™
- 2 SEALANT BEAD & BACKER ROD.
- 3 TRANSITION MEMBRANE FULLY ADHERED TO WALL.
- 4 COMPRESSIBLE BACKER ROD & CAULKING @ OPENING PERIMETER.
- 5 THROUGH-WALL FLASHING.
- 6 EXTERIOR GYPSUM SHEATHING.



WINDOW HEAD

SKETCH NO.

AB5

SCALE
3"=1'-0"

ISSUE DATE
01/20/11

REV. NO.

CAD FILE:
WINDOW HEAD.dwg

Johns Manville and Corbond Corporation (together, "JM") Manufacture spray polyurethane foam insulation products and offer this general conceptual information to you as a courtesy. This complimentary assistance is not to be used or relied upon by anyone as a substitute for professional engineering design and documentation required by building code, contract, or applicable law. By accepting these comments you agree they do not constitute any representations, endorsements of, or an assumption by JM of any liability for either the adequacy of the design of this building or any other material not supplied by JM.

