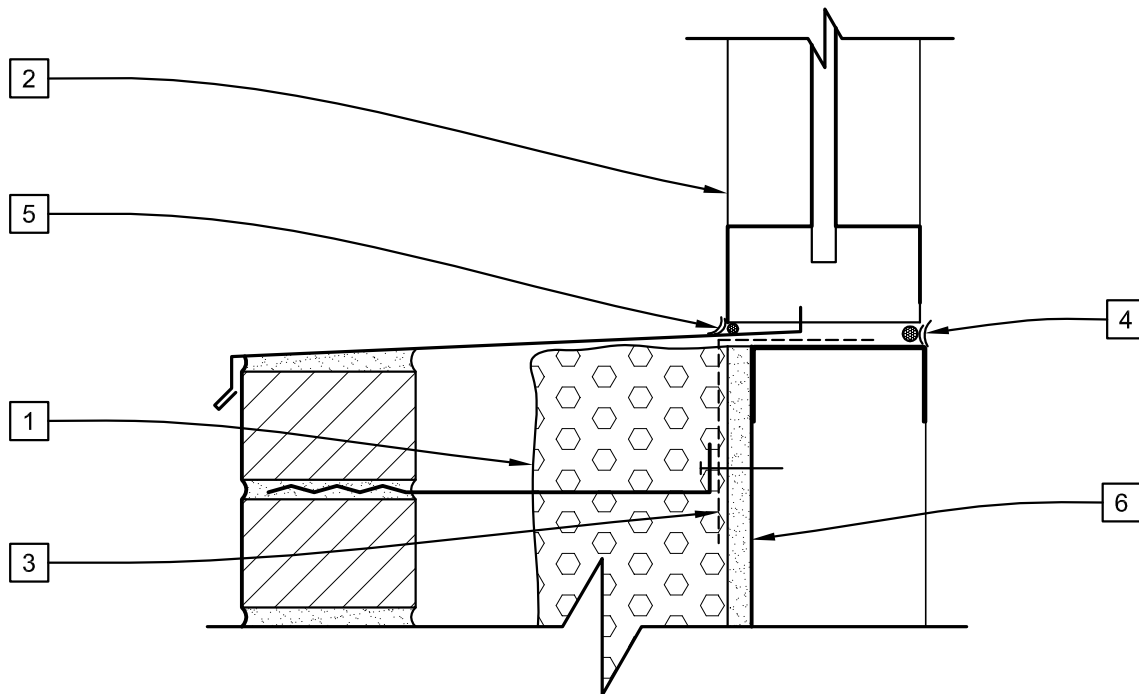


LEGEND

- 1 JM CORBOND III™
- 2 SEALANT BEAD & BACKER ROD.
- 3 LAPPED TRANSITION MEMBRANE FULLY ADHERED TO WALL.
- 4 COMPRESSIBLE BACKER ROD & CAULKING @ OPENING PERIMETER.
- 5 SEALANT BEAD BETWEEN WINDOW FRAME & SILL (TO MAINTAIN THE CONTINUITY OF THE PLANE OF AIRTIGHTNESS TO THE WINDOW).
- 6 EXTERIOR GYPSUM SHEATHING.



WINDOW SILL

SKETCH NO.

AB4

SCALE
3"=1'-0"

ISSUE DATE
01/20/11

REV. NO.

Johns Manville and Corbond Corporation (together, "JM") Manufacture spray polyurethane foam insulation products and offer this general conceptual information to you as a courtesy. This complimentary assistance is not to be used or relied upon by anyone as a substitute for professional engineering design and documentation required by building code, contract, or applicable law. By accepting these comments you agree they do not constitute any representations, endorsements of, or an assumption by JM of any liability for either the adequacy of the design of this building or any other material not supplied by JM.

CAD FILE:
WINDOW SILL.dwg

