



PRODUCT DATA SHEET

COMPANY

Johns Manville is committed to creating more comfortable, healthier and energy-efficient indoor environments. We are the only company to manufacture a complete hybrid insulation solution system. At JM, we believe that in every detail, materials matter.

DESCRIPTION

JM mineral wool batts are made of inorganic fibers derived from basalt, a volcanic rock enhanced with glass fibers, with a thermosetting resin binder. Advanced manufacturing technology ensures consistent product quality, with high-fiber density and low shot content for excellent performance. JM mineral wool batts are inorganic, noncombustible, moisture resistant, non-deteriorating, and will not mildew or support corrosion.

USE

JM mineral wool batts are designed to deliver thermal and noise control in wood-stud cavities of interior and exterior walls, basements, ceilings, floors and crawl spaces.

INSTALLATION

In standard wood framing, carefully insert batts between the wood studs or joists to fill the cavities with a friction-fit to framing members. JM mineral wool batts are easily cut with a knife for quick installation and snug fit in nonstandard size cavities.

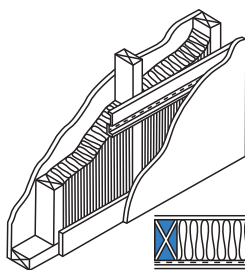
Suspended Ceilings: When approved by the ceiling system manufacturer, lay JM mineral wool batts over the ceiling area so that the insulating material is supported by the ceiling suspension system, not the ceiling panels themselves.

PACKAGING

JM is the only manufacturer to offer compression packaging for mineral wool products for more efficient storage and transport.

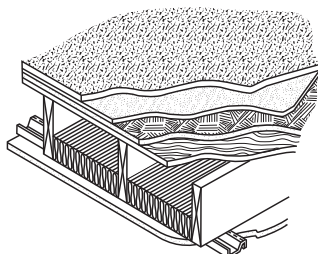
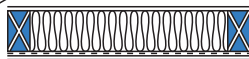
DESIGN CONSIDERATIONS

This product is not listed as a component in fire-rated protection systems.



Wood Frame Wall (STC-45)

Single 2x4 wood studs, 16" on center with resilient channel, single layer 5/8" gypsum board each side, 3" JM mineral wool batt insulation.



Wood Floor (STC-47)

23/32" OSB subfloor, 2x10 Joists 16" o.c., 3" mineral wool batt insulation, resilient channel, 5/8" gypsum board.

PERFORMANCE ADVANTAGES

Excellent Acoustical Performance:

Lightweight, flexible insulation batts are excellent sound absorbers, efficiently reducing sound transmission. JM mineral wool batts improve the Sound Transmission Class (STC) ratings of interior partition walls and suspended ceilings.

Dependable Thermal Performance:

With high fiber quality and low shot content, JM mineral wool batts deliver consistent thermal insulating performance at the rated R-value.

Fire Safety: Noncombustible JM mineral wool batt insulation contributes to high fire-resistance ratings in insulated assemblies.

Noncombustible: See Specification Compliance for details.

Mold Resistant: JM mineral wool batts do not support growth of fungi.

Does not sustain vermin.





Mineral Wool Insulation Made of Bonded Inorganic Fibers Derived from Basalt



PRODUCT DATA SHEET

MINERAL WOOL

LIMITATIONS OF USE

Check applicable building codes.

APPLICABLE STANDARDS & BUILDING CODE CLASSIFICATION

JM MINERAL WOOL BATTS

ASTM C665, Type 1

ASTM E136 noncombustible

ASTM E84 Flame Spread/Smoke Developed, 5/0 or less

IBC (International Building Code) all types

PHYSICAL PROPERTIES

PROPERTY	TEST METHOD	RATING
Thermal Resistance ¹	ASTM C518	R-15
Sound Transmission Class ²	ASTM E90	See assembly listings
Surface Burning Characteristics	ASTM E84	Flame spread 5/smoke 0
Critical Radiant Flux	ASTM E970	Greater than 0.12 W/cm ²
Water Vapor Sorption	ASTM C1104	Less than 5%
Odor Emission	ASTM C1304	Pass
Corrosiveness	ASTM C665	Pass
Fungi Resistance	ASTM C1338	Pass

¹R-15 Temp Control.

²Sound and Fire Block.

STANDARD SIZES

PRODUCT	THICKNESS in (mm)	WIDTH in (mm)	LENGTH in (mm)
R-15 Temp Control™	3½" (88.9)	15¼" (387.35), 23 (584.2)	47" (1193.8)
Sound and Fire Block™	3" (76.2)	15¼" (387.35)	47" (1193.8)



Visit our website at specJM.com or call **1-800-654-3103** | 717 17th Street Denver, CO 80202

Technical specifications as shown in this literature are intended to be used as general guidelines only. The physical and chemical properties of the mineral wool insulation listed herein represent typical, average values obtained in accordance with accepted test methods and are subject to normal manufacturing variations. They are supplied as a technical service and are subject to change without notice. Any references to numerical flame spread or smoke developed ratings are not intended to reflect hazards presented by these or any other materials under actual fire conditions. Check with the sales office nearest you for current information. All Johns Manville products are sold subject to Johns Manville's Limited Warranty and Limitation of Remedy. For a copy of the Johns Manville Limited Warranty and Limitation of Remedy or for information on other Johns Manville thermal and acoustical insulation and systems, visit the website or call the 800 number above.

BID-0166 8/13 (New)

© 2013 Johns Manville

JMRET130170