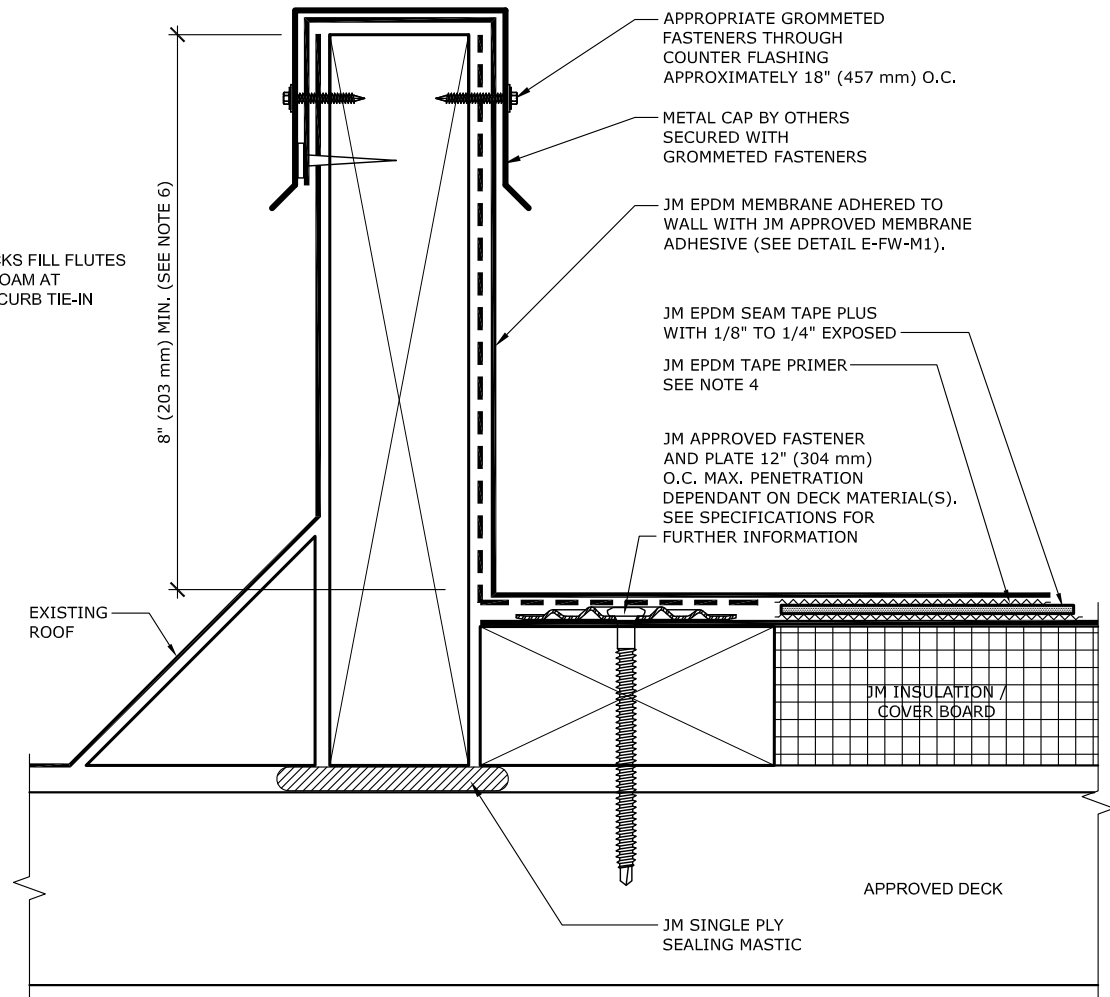


ISOMETRIC VIEW OF STEEL DECK INSTALLATION

ON STEEL DECKS FILL FLUTES WITH SPRAY FOAM AT LOCATION OF CURB TIE-IN



NOTES:

1. REFER TO JOHNS MANVILLE WEBSITE (www.jm.com) FOR MOST UP-TO-DATE INFORMATION.
2. PLEASE SEE SINGLE PLY FLASHING SPECIFICATIONS FOR A FULL DESCRIPTION OF INSTALLATION INSTRUCTIONS AND REQUIREMENTS WHICH ARE CONSIDERED A PART OF THIS DETAIL.
3. ANY CARPENTRY OR METAL WORK SHOULD BE DESIGNED AND CONSTRUCTED IN ACCORDANCE WITH LOCAL CODE REQUIREMENTS AND/OR PROJECT SPECIFICATIONS. THESE COMPONENTS SHOULD BE REVIEWED AND APPROVED BY A LICENSED DESIGN PROFESSIONAL.
4. JM EPDM TAPE PRIMER OR JM SINGLE PLY MEMBRANE PRIMER (LOW VOC) MUST BE APPLIED ON ALL SURFACES COMING INTO CONTACT WITH JM EPDM SEAM TAPE PLUS, ROLL MEMBRANE WITH HAND ROLLER UNDER PRESSURE AT SEAM IN ACCORDANCE WITH THE JM EPDM INSTALLATION GUIDE.
5. 1/8" TO 1/4" OF JM EPDM SEAM TAPE PLUS MUST BE EXPOSED ALONG ENTIRE LENGTH OF ALL SEAMS.
6. HEIGHT OF CURB TO BE ADJUSTED WITH NAILERS. IT IS PREFERRED TO RAISE CURB ONTO NAILERS TO EXTEND FLASHING HEIGHT.
7. SEE E-FW-B DETAILS FOR JM APPROVED BASE FLASHING TIE IN TERMINATION METHODS.

CURB TIE-IN TO ROOF

DRAWING NO.

E-TI-02

NEW DETAIL

MEMBRANE TYPE:

EPDM

MAXIMUM GUARANTEE TERM:

20 YEAR

ISSUE DATE

7-11-17

SCALE

N.T.S

Johns Manville is a manufacturer of commercial roofing products and offers this general conceptual information to you as a courtesy. This complimentary assistance is not to be used or relied upon by anyone as a substitute for professional engineering design and documentation required by building code, contract, or applicable law. By accepting these comments you agree they do not constitute any representations, endorsements of, or an assumption by Johns Manville of any liability for either the adequacy of the design of this building or any other material not supplied by Johns Manville.

