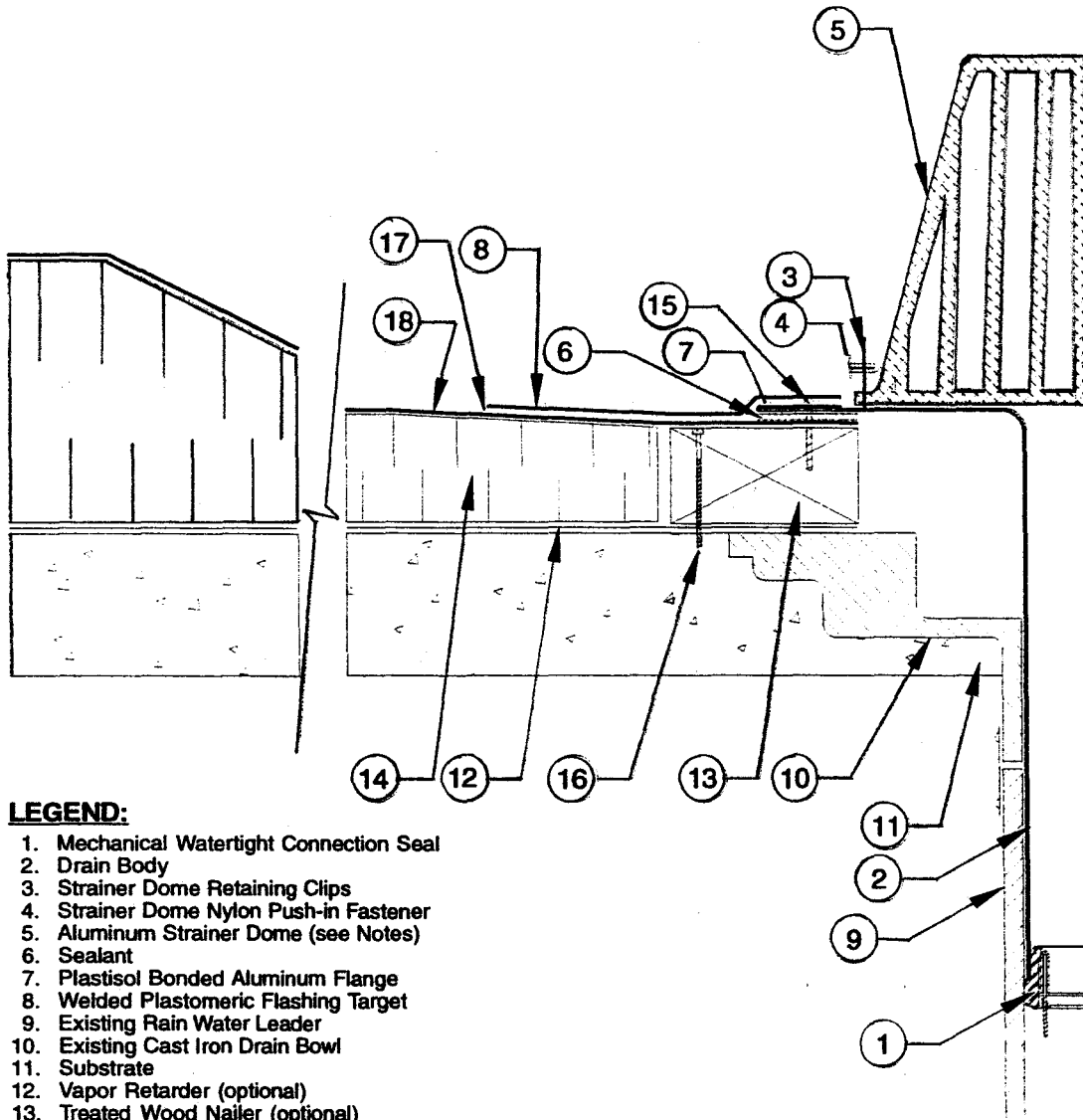


PLASTOMERIC - P.V.C. TYPE MEMBRANES.



LEGEND:

- 1. Mechanical Watertight Connection Seal
- 2. Drain Body
- 3. Strainer Dome Retaining Clips
- 4. Strainer Dome Nylon Push-in Fastener
- 5. Aluminum Strainer Dome (see Notes)
- 6. Sealant
- 7. Plastisol Bonded Aluminum Flange
- 8. Welded Plastomeric Flashing Target
- 9. Existing Rain Water Leader
- 10. Existing Cast Iron Drain Bowl
- 11. Substrate
- 12. Vapor Retarder (optional)
- 13. Treated Wood Nailer (optional)
- 14. Insulation (sloped to drain)
- 15. Flange Fastener
- 16. Wood Nailer Fastener
- 17. 25 mm (1") Minimum Weld
- 18. Plastomeric Membrane

NOTES:

- 1. Refer to Roof Membrane Manufacturer for their approved installation detail.
- 2. Sumped area should be approximately 1x1 meter (3x3 feet).
- 3. U-Flow Strainer Domes comply with National Plumbing Code Requirements.

PVC AlumaWeld® - A with Plastomeric P.V.C. type Membrane.			TD-J996000E	
JM Johns Manville	Date: 01/14/95	Scale: 1" = 4"	Drawn by: LEW	Checked by: KMZ