

# SOUND

ACOUSTICAL ASSEMBLIES  
REFERENCE GUIDE

# MANAGEMENT



**Johns Manville**  
A Berkshire Hathaway Company

# AS AN INDUSTRY LEADER

*in insulation solutions, Johns Manville takes great pride in developing products with strong sound-attenuating properties. **We achieve this by paying strict attention to third-party research and meeting industry standards.** Our products also undergo rigorous testing in our own certified laboratories to ensure that we deliver the solutions our customers have depended on for years.*

*Refer to this easy-to-use guide to determine the most appropriate assemblies to meet your Sound Transmission Class (STC) requirements. With the widest offerings on the market and a customer service staff ready to offer full support, we are confident you'll find the appropriate sound-control solution you need for your project.*

## TABLE OF CONTENTS

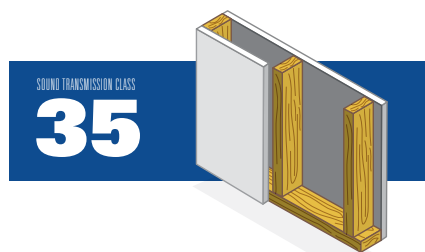
<b>Fiberglass Interior Wall Assemblies</b>	
Single Wood Studs	4
Staggered Wood Studs	6
Double Wood Studs	7
2½" 25-Gauge Steel Studs	8
3⅝" 25-Gauge Steel Studs	9
3⅝" 20-Gauge Steel Studs	10
6" Steel Studs	11
<b>Fiberglass Floor/Ceiling Assemblies</b>	12
<b>Spray Foam Interior Wall Assemblies</b>	14
<b>Sheathing Continuous Insulation Exterior Residential Wall Assemblies</b>	16

# ***FIBERGLASS***

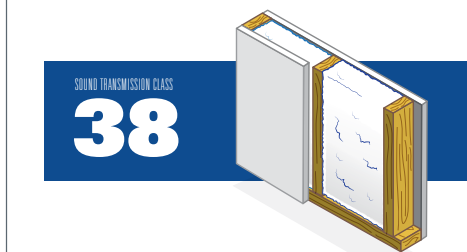
---

*Fiberglass is one of America's most common insulation materials. JM Formaldehyde-free™ thermal and acoustical fiberglass insulation is comprised of long, resilient glass fibers bonded with a thermosetting resin.*

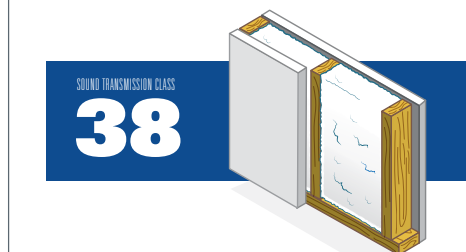
## Single Wood Studs | 2" × 4" (38 mm × 89 mm)



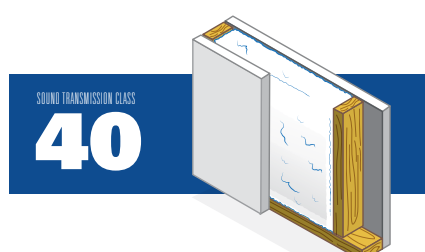
<b>STC</b>	35
<b>Stud Spacing</b>	16" (406 mm) o.c.
<b>Gypsum Thickness</b>	½" (13 mm)
<b>Gypsum Layers</b>	Side A: 1 Side B: 1
<b>Fiberglass Thickness</b>	None
<b>Resilient Channels</b>	No



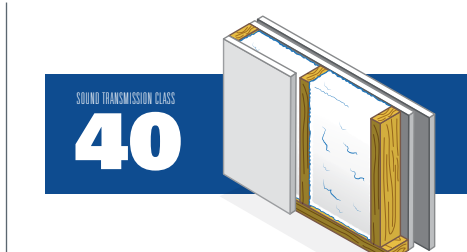
<b>STC</b>	38
<b>Stud Spacing</b>	16" (406 mm) o.c.
<b>Gypsum Thickness</b>	½" (13 mm)
<b>Gypsum Layers</b>	Side A: 1 Side B: 1
<b>Fiberglass Thickness</b>	3⅝" (92 mm) R-13 batts
<b>Resilient Channels</b>	No



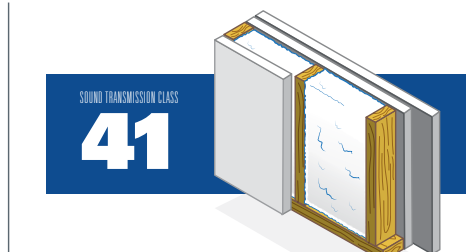
<b>STC</b>	38
<b>Stud Spacing</b>	16" (406 mm) o.c.
<b>Gypsum Thickness</b>	⅝" (16 mm)
<b>Gypsum Layers</b>	Side A: 1 Side B: 1
<b>Fiberglass Thickness</b>	3⅝" (92 mm) R-13 batts
<b>Resilient Channels</b>	No



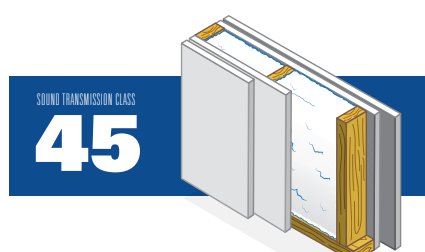
<b>STC</b>	40
<b>Stud Spacing</b>	24" (610 mm) o.c.
<b>Gypsum Thickness</b>	⅝" (16 mm)
<b>Gypsum Layers</b>	Side A: 1 Side B: 1
<b>Fiberglass Thickness</b>	3⅝" (92 mm) R-13 batts
<b>Resilient Channels</b>	No



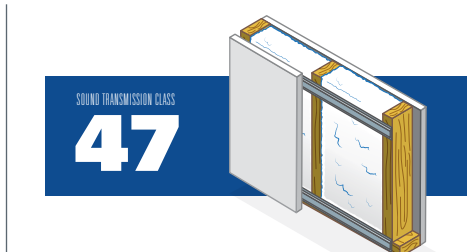
<b>STC</b>	40
<b>Stud Spacing</b>	16" (406 mm) o.c.
<b>Gypsum Thickness</b>	½" (13 mm)
<b>Gypsum Layers</b>	Side A: 1 Side B: 2
<b>Fiberglass Thickness</b>	3⅝" (92 mm) R-13 batts
<b>Resilient Channels</b>	No



<b>STC</b>	41
<b>Stud Spacing</b>	16" (406 mm) o.c.
<b>Gypsum Thickness</b>	⅝" (16 mm)
<b>Gypsum Layers</b>	Side A: 1 Side B: 2
<b>Fiberglass Thickness</b>	3⅝" (92 mm) R-13 batts
<b>Resilient Channels</b>	No



<b>STC</b>	45
<b>Stud Spacing</b>	16" (406 mm) o.c.
<b>Gypsum Thickness</b>	½" (13 mm)
<b>Gypsum Layers</b>	Side A: 2 Side B: 2
<b>Fiberglass Thickness</b>	3⅝" (92 mm) R-13 batts
<b>Resilient Channels</b>	No



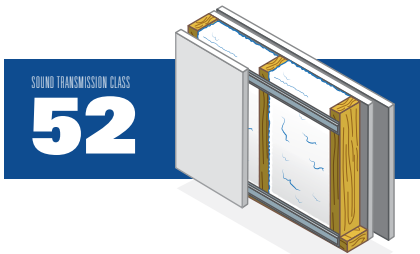
<b>STC</b>	47
<b>Stud Spacing</b>	16" (406 mm) o.c.
<b>Gypsum Thickness</b>	½" (13 mm)
<b>Gypsum Layers</b>	Side A: 1 Side B: 1
<b>Fiberglass Thickness</b>	3⅝" (92 mm) R-13 batts
<b>Resilient Channels</b>	24" (610 mm) o.c. (vertical)



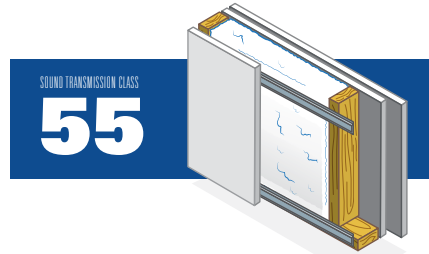
<b>STC</b>	52
<b>Stud Spacing</b>	24" (610 mm) o.c.
<b>Gypsum Thickness</b>	⅝" (16 mm)
<b>Gypsum Layers</b>	Side A: 1 Side B: 1
<b>Fiberglass Thickness</b>	3⅝" (92 mm) R-13 batts
<b>Resilient Channels</b>	24" (610 mm) o.c. (vertical)



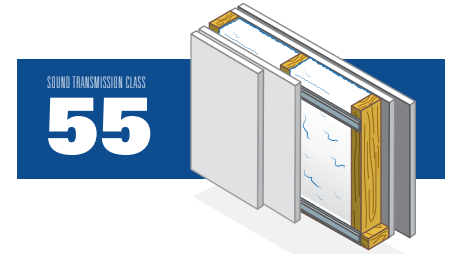
## Single Wood Studs | 2" × 4" (38 mm × 89 mm)



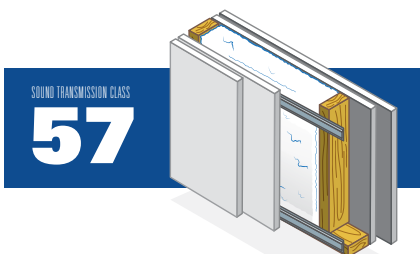
<b>STC</b>	52
<b>Stud Spacing</b>	16" (406 mm) o.c.
<b>Gypsum Thickness</b>	½" (13 mm)
<b>Gypsum Layers</b>	Side A: 1 Side B: 2
<b>Fiberglass Thickness</b>	3¾" (92 mm) R-13 batts
<b>Resilient Channels</b>	24" (610 mm) o.c. (vertical)



<b>STC</b>	55
<b>Stud Spacing</b>	24" (610 mm) o.c.
<b>Gypsum Thickness</b>	½" (13 mm)
<b>Gypsum Layers</b>	Side A: 1 Side B: 2
<b>Fiberglass Thickness</b>	3¾" (92 mm) R-13 batts
<b>Resilient Channels</b>	24" (610 mm) o.c. (vertical)



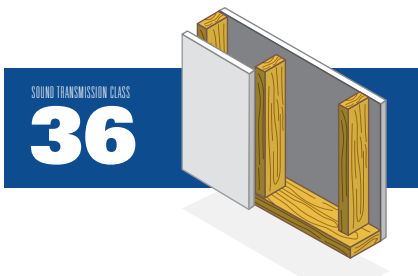
<b>STC</b>	55
<b>Stud Spacing</b>	16" (406 mm) o.c.
<b>Gypsum Thickness</b>	½" (13 mm)
<b>Gypsum Layers</b>	Side A: 1 Side B: 2
<b>Fiberglass Thickness</b>	3¾" (92 mm) R-13 batts
<b>Resilient Channels</b>	24" (610 mm) o.c. (vertical)



<b>STC</b>	57
<b>Stud Spacing</b>	24" (610 mm) o.c.
<b>Gypsum Thickness</b>	½" (13 mm)
<b>Gypsum Layers</b>	Side A: 2 Side B: 2
<b>Fiberglass Thickness</b>	3¾" (92 mm) R-13 batts
<b>Resilient Channels</b>	24" (610 mm) o.c. (vertical)

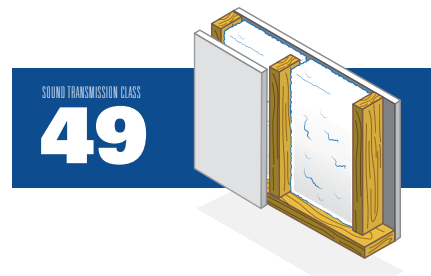
## Staggered Wood Studs | 2" x 4" (38 mm x 89 mm)

No Resilient Channels



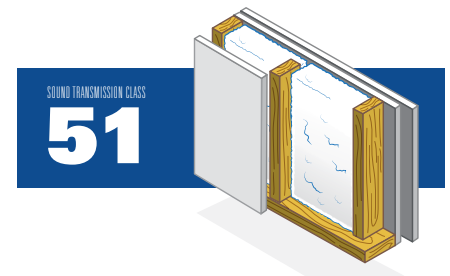
SOUND TRANSMISSION CLASS  
**36**

<b>Stud Spacing</b>	16" (406 mm) o.c.
<b>Gypsum Thickness</b>	½" (13 mm)
<b>Gypsum Layers</b>	Side A: 1 Side B: 1
<b>Fiberglass Thickness</b>	None



SOUND TRANSMISSION CLASS  
**49**

<b>Stud Spacing</b>	16" (406 mm) o.c.
<b>Gypsum Thickness</b>	½" (13 mm)
<b>Gypsum Layers</b>	Side A: 1 Side B: 1
<b>Fiberglass Thickness</b>	3⅝" (92 mm) R-13 batts



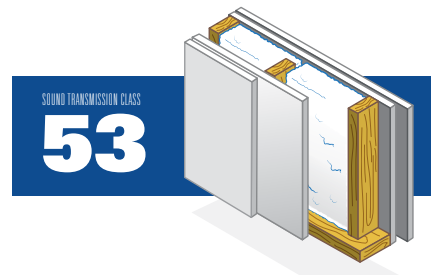
SOUND TRANSMISSION CLASS  
**51**

<b>Stud Spacing</b>	16" (406 mm) o.c.
<b>Gypsum Thickness</b>	½" (13 mm)
<b>Gypsum Layers</b>	Side A: 1 Side B: 2
<b>Fiberglass Thickness</b>	3⅝" (92 mm) R-13 batts



SOUND TRANSMISSION CLASS  
**52**

<b>Stud Spacing</b>	24" (610 mm) o.c.
<b>Gypsum Thickness</b>	½" (13 mm)
<b>Gypsum Layers</b>	Side A: 1 Side B: 1
<b>Fiberglass Thickness</b>	3⅝" (92 mm) R-13 batts



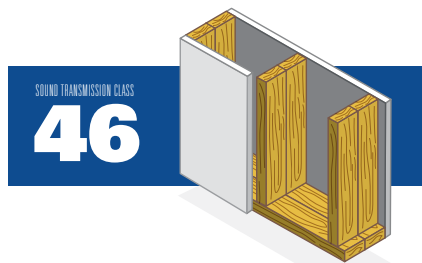
SOUND TRANSMISSION CLASS  
**53**

<b>Stud Spacing</b>	16" (406 mm) o.c.
<b>Gypsum Thickness</b>	½" (13 mm)
<b>Gypsum Layers</b>	Side A: 2 Side B: 2
<b>Fiberglass Thickness</b>	3⅝" (92 mm) R-13 batts

## Double Wood Studs

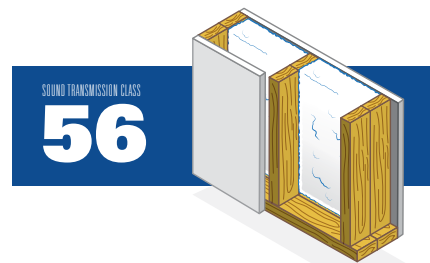
2" × 4" + 2" × 4" (38 mm × 89 mm + 38 mm × 89 mm)

No Resilient Channels



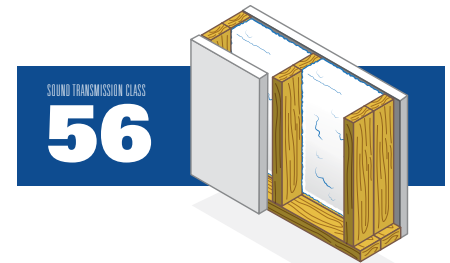
SOUND TRANSMISSION CLASS  
**46**

<b>Stud Spacing</b>	16" (406 mm) o.c.
<b>Gypsum Thickness</b>	½" (13 mm)
<b>Gypsum Layers</b>	Side A: 1 Side B: 1
<b>Fiberglass Thickness</b>	None



SOUND TRANSMISSION CLASS  
**56**

<b>Stud Spacing</b>	16" (406 mm) o.c.
<b>Gypsum Thickness</b>	½" (13 mm)
<b>Gypsum Layers</b>	Side A: 1 Side B: 1
<b>Fiberglass Thickness</b>	3⅝" (92 mm) R-13 batts



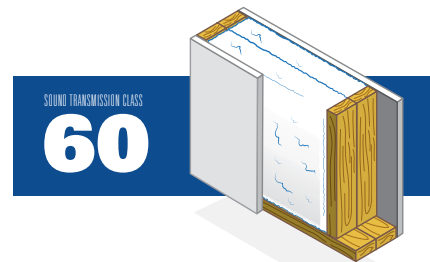
SOUND TRANSMISSION CLASS  
**56**

<b>Stud Spacing</b>	16" (406 mm) o.c.
<b>Gypsum Thickness</b>	⅝" (16 mm)
<b>Gypsum Layers</b>	Side A: 1 Side B: 1
<b>Fiberglass Thickness</b>	3⅝" (92 mm) R-13 batts



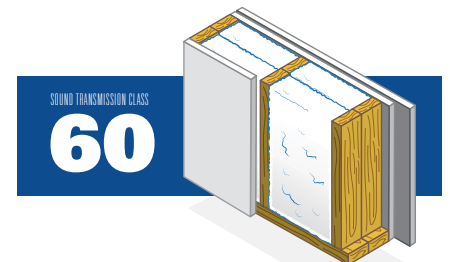
SOUND TRANSMISSION CLASS  
**57**

<b>Stud Spacing</b>	16" (406 mm) o.c.
<b>Gypsum Thickness</b>	½" (13 mm)
<b>Gypsum Layers</b>	Side A: 1 Side B: 1
<b>Fiberglass Thickness</b>	2 × 3⅝" (92 mm) R-13 batts



SOUND TRANSMISSION CLASS  
**60**

<b>Stud Spacing</b>	24" (610 mm) o.c.
<b>Gypsum Thickness</b>	½" (13 mm)
<b>Gypsum Layers</b>	Side A: 1 Side B: 1
<b>Fiberglass Thickness</b>	2 × 3⅝" (92 mm) R-13 batts



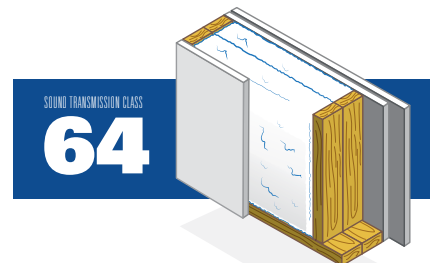
SOUND TRANSMISSION CLASS  
**60**

<b>Stud Spacing</b>	16" (406 mm) o.c.
<b>Gypsum Thickness</b>	½" (13 mm)
<b>Gypsum Layers</b>	Side A: 1 Side B: 2
<b>Fiberglass Thickness</b>	2 × 3⅝" (92 mm) R-13 batts



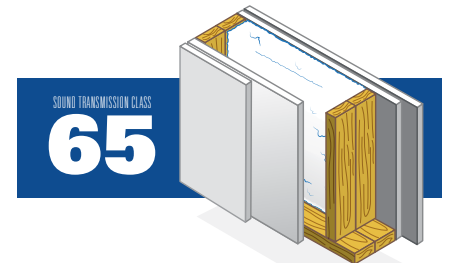
SOUND TRANSMISSION CLASS  
**63**

<b>Stud Spacing</b>	16" (406 mm) o.c.
<b>Gypsum Thickness</b>	½" (13 mm)
<b>Gypsum Layers</b>	Side A: 2 Side B: 2
<b>Fiberglass Thickness</b>	2 × 3⅝" (92 mm) R-13 batts



SOUND TRANSMISSION CLASS  
**64**

<b>Stud Spacing</b>	24" (610 mm) o.c.
<b>Gypsum Thickness</b>	½" (13 mm)
<b>Gypsum Layers</b>	Side A: 1 Side B: 2
<b>Fiberglass Thickness</b>	2 × 3⅝" (92 mm) R-13 batts



SOUND TRANSMISSION CLASS  
**65**

<b>Stud Spacing</b>	24" (610 mm) o.c.
<b>Gypsum Thickness</b>	½" (13 mm)
<b>Gypsum Layers</b>	Side A: 2 Side B: 2
<b>Fiberglass Thickness</b>	2 × 3⅝" (92 mm) R-13 batts

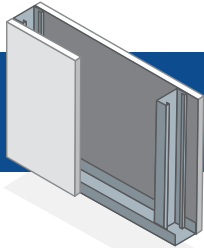
## Steel Studs | 2½" (64 mm)

25-Gauge Steel

24" (610 mm) o.c. Stud Spacing

No Resilient Channels

SOUND TRANSMISSION CLASS  
**36**



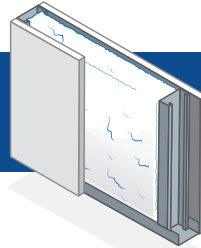
**Gypsum Thickness** ½" (13 mm)

**Gypsum Layers** Side A: 1

Side B: 1

**Fiberglass Thickness** None

SOUND TRANSMISSION CLASS  
**45**



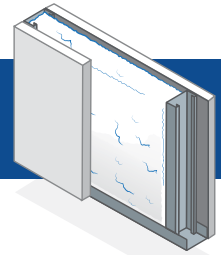
**Gypsum Thickness** ½" (13 mm)

**Gypsum Layers** Side A: 1

Side B: 1

**Fiberglass Thickness** 2¾" (70 mm) batts

SOUND TRANSMISSION CLASS  
**47**



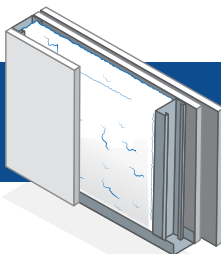
**Gypsum Thickness** 5/8" (16 mm)

**Gypsum Layers** Side A: 1

Side B: 1

**Fiberglass Thickness** 2¾" (70 mm) batts

SOUND TRANSMISSION CLASS  
**50**



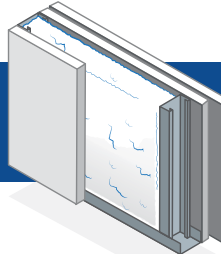
**Gypsum Thickness** ½" (13 mm)

**Gypsum Layers** Side A: 1

Side B: 2

**Fiberglass Thickness** 2¾" (70 mm) batts

SOUND TRANSMISSION CLASS  
**52**



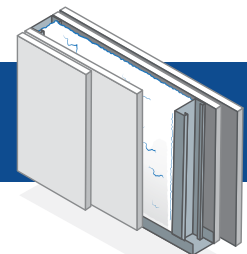
**Gypsum Thickness** 5/8" (16 mm)

**Gypsum Layers** Side A: 1

Side B: 2

**Fiberglass Thickness** 2¾" (70 mm) batts

SOUND TRANSMISSION CLASS  
**54**



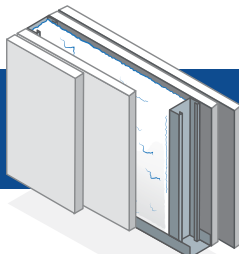
**Gypsum Thickness** ½" (13 mm)

**Gypsum Layers** Side A: 2

Side B: 2

**Fiberglass Thickness** 2¾" (70 mm) batts

SOUND TRANSMISSION CLASS  
**57**



**Gypsum Thickness** 5/8" (16 mm)

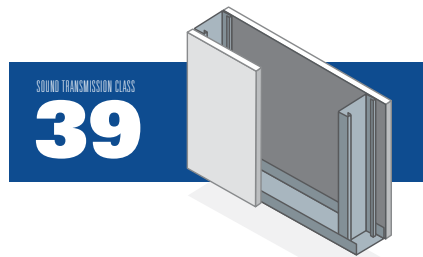
**Gypsum Layers** Side A: 2

Side B: 2

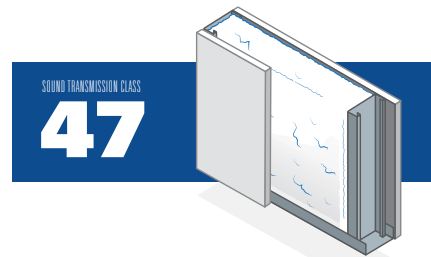
**Fiberglass Thickness** 2¾" (70 mm) batts

## Steel Studs | 3<sup>5</sup>/<sub>8</sub>" (92 mm)

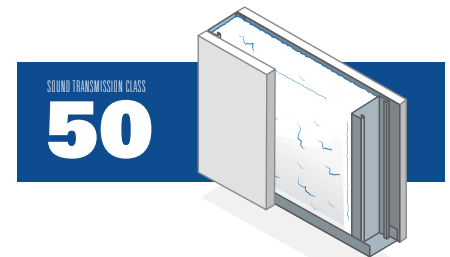
25-Gauge Steel | No Resilient Channels



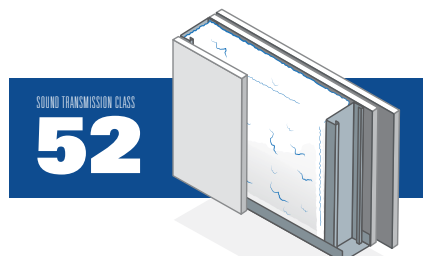
<b>Stud Spacing</b>	24" (610 mm) o.c.
<b>Gypsum Thickness</b>	1/2" (13 mm)
<b>Gypsum Layers</b>	Side A: 1 Side B: 1
<b>Fiberglass Thickness</b>	None



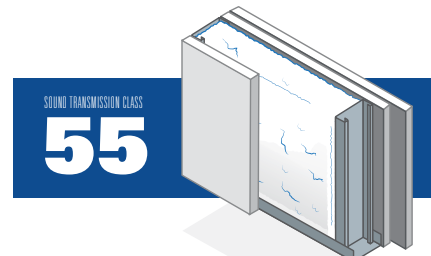
<b>Stud Spacing</b>	24" (610 mm) o.c.
<b>Gypsum Thickness</b>	1/2" (13 mm)
<b>Gypsum Layers</b>	Side A: 1 Side B: 1
<b>Fiberglass Thickness</b>	3 <sup>5</sup> / <sub>8</sub> " (92 mm) R-13 batts



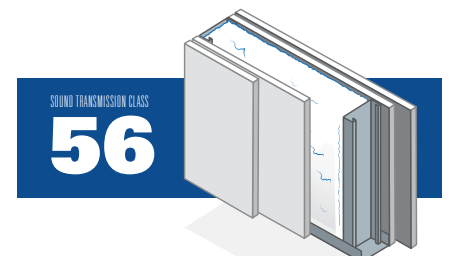
<b>Stud Spacing</b>	24" (610 mm) o.c.
<b>Gypsum Thickness</b>	5/8" (16 mm)
<b>Gypsum Layers</b>	Side A: 1 Side B: 1
<b>Fiberglass Thickness</b>	3 <sup>5</sup> / <sub>8</sub> " (92 mm) R-13 batts



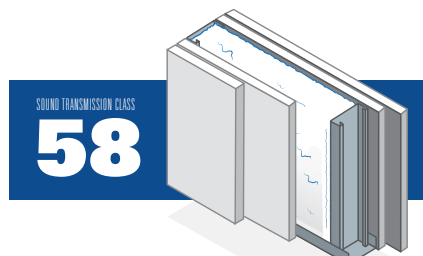
<b>Stud Spacing</b>	16" (406 mm) o.c.
<b>Gypsum Thickness</b>	1/2" (13 mm)
<b>Gypsum Layers</b>	Side A: 1 Side B: 2
<b>Fiberglass Thickness</b>	3 <sup>5</sup> / <sub>8</sub> " (92 mm) R-13 batts



<b>Stud Spacing</b>	24" (610 mm) o.c.
<b>Gypsum Thickness</b>	5/8" (16 mm)
<b>Gypsum Layers</b>	Side A: 1 Side B: 2
<b>Fiberglass Thickness</b>	3 <sup>5</sup> / <sub>8</sub> " (92 mm) R-13 batts



<b>Stud Spacing</b>	24" (610 mm) o.c.
<b>Gypsum Thickness</b>	5/8" (13 mm)
<b>Gypsum Layers</b>	Side A: 2 Side B: 2
<b>Fiberglass Thickness</b>	3 <sup>5</sup> / <sub>8</sub> " (92 mm) R-13 batts

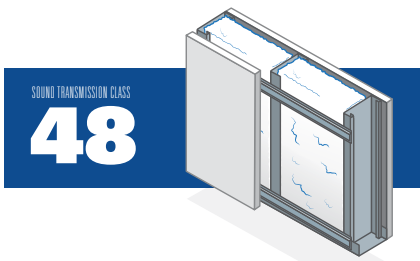


<b>Stud Spacing</b>	24" (610 mm) o.c.
<b>Gypsum Thickness</b>	5/8" (16 mm)
<b>Gypsum Layers</b>	Side A: 2 Side B: 2
<b>Fiberglass Thickness</b>	3 <sup>5</sup> / <sub>8</sub> " (92 mm) R-13 batts

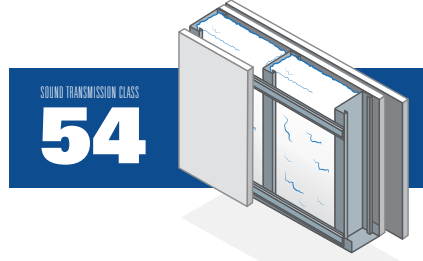


## Steel Studs | 3<sup>5</sup>/<sub>8</sub>" (92 mm)

20-Gauge Steel



<b>STC</b>	<b>48</b>
<b>Stud Spacing</b>	16" (406 mm) o.c.
<b>Gypsum Thickness</b>	½" (13 mm)
<b>Gypsum Layers</b>	Side A: 1 Side B: 1
<b>Fiberglass Thickness</b>	3 <sup>5</sup> / <sub>8</sub> " (92 mm) R-13 batts
<b>Resilient Channels</b>	24" (610 mm) o.c. (vertical)



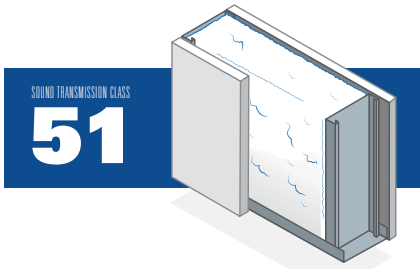
<b>STC</b>	<b>54</b>
<b>Stud Spacing</b>	16" (406 mm) o.c.
<b>Gypsum Thickness</b>	½" (13 mm)
<b>Gypsum Layers</b>	Side A: 1 Side B: 2
<b>Fiberglass Thickness</b>	3 <sup>5</sup> / <sub>8</sub> " (92 mm) R-13 batts
<b>Resilient Channels</b>	24" (610 mm) o.c. (vertical)



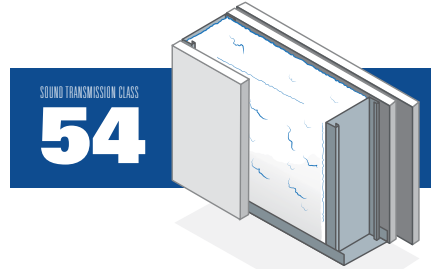
<b>STC</b>	<b>60</b>
<b>Stud Spacing</b>	16" (406 mm) o.c.
<b>Gypsum Thickness</b>	½" (13 mm)
<b>Gypsum Layers</b>	Side A: 2 Side B: 2
<b>Fiberglass Thickness</b>	3 <sup>5</sup> / <sub>8</sub> " (92 mm) R-13 batts
<b>Resilient Channels</b>	24" (610 mm) o.c. (vertical)

## Steel Studs | 6" (152 mm)

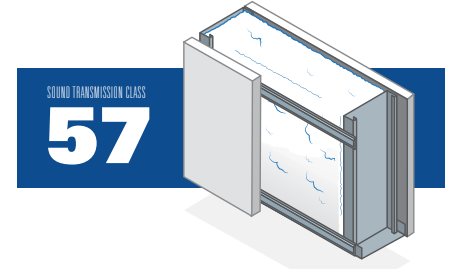
25-Gauge Steel	24" (610 mm) o.c. Stud Spacing	5/8" (16 mm) thick Gypsum Board	6 1/2" (165 mm) thick R-19 Fiberglass Batts
----------------	--------------------------------	---------------------------------	---



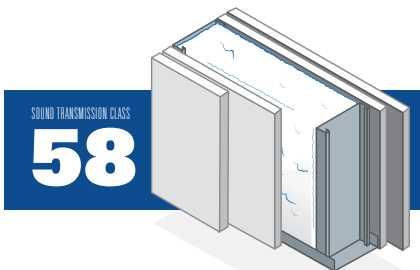
<b>Gypsum Layers</b>	Side A: 1
	Side B: 1
<b>Resilient Channels</b>	No



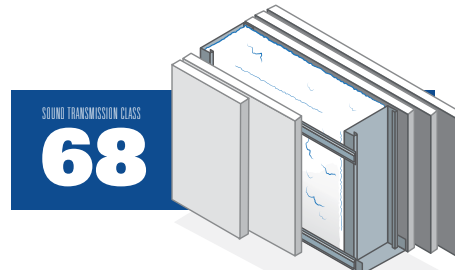
<b>Gypsum Layers</b>	Side A: 1
	Side B: 2
<b>Resilient Channels</b>	No



<b>Gypsum Layers</b>	Side A: 1
	Side B: 1
<b>Resilient Channels</b>	24" (610 mm) o.c. (vertical)



<b>Gypsum Layers</b>	Side A: 2
	Side B: 2
<b>Resilient Channels</b>	No

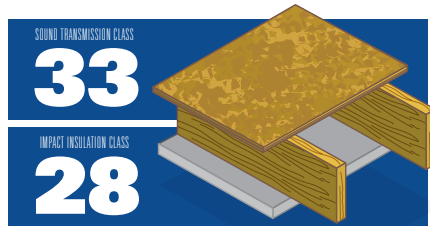


<b>Gypsum Layers</b>	Side A: 2
	Side B: 3
<b>Resilient Channels</b>	24" (610 MM) o.c. (vertical)

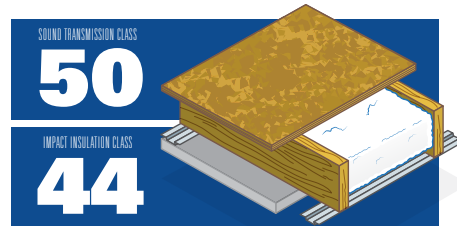
## Floor/Ceiling Assemblies

16" (406 mm) o.c. Joist Spacing

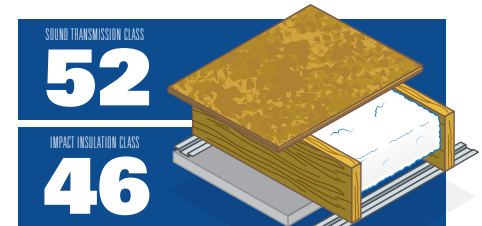
5/8" (16 mm) Gypsum Board Ceiling



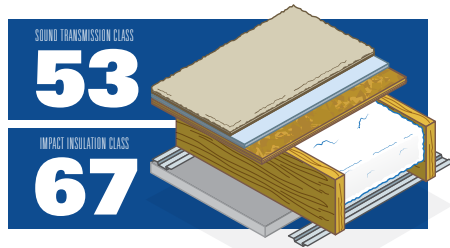
<b>Wood Joist</b>	2" × 10" (38 mm × 235 mm)
<b>Floor Topping</b>	1 <sup>9</sup> / <sub>32</sub> " OSB subfloor
<b>Fiberglass Thickness</b>	None
<b>Resilient Channels</b>	No



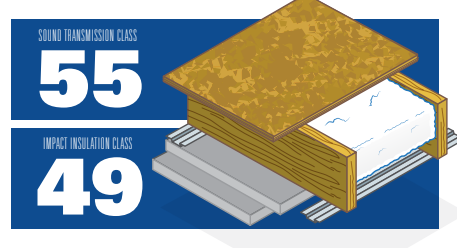
<b>Wood Joist</b>	2" × 8" (38 mm × 184 mm)
<b>Floor Topping</b>	1 <sup>9</sup> / <sub>32</sub> " OSB subfloor
<b>Fiberglass Thickness</b>	6 <sup>1</sup> / <sub>2</sub> " (165 mm) R-19 batts
<b>Resilient Channels</b>	24" (610 mm) o.c. (vertical)



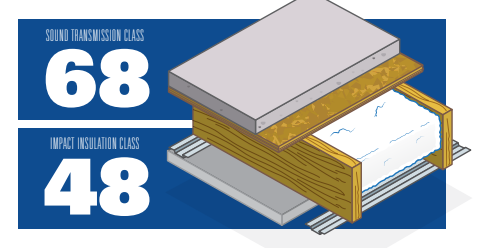
<b>Wood Joist</b>	2" × 10" (38 mm × 235 mm)
<b>Floor Topping</b>	1 <sup>9</sup> / <sub>32</sub> " OSB subfloor
<b>Fiberglass Thickness</b>	6 <sup>1</sup> / <sub>2</sub> " (165 mm) R-19 batts
<b>Resilient Channels</b>	24" (610 mm) o.c. (vertical)



<b>Wood Joist</b>	2" × 10" (38 mm × 235 mm)
<b>Floor Topping</b>	1 <sup>9</sup> / <sub>32</sub> " OSB subfloor + pad + carpet
<b>Fiberglass Thickness</b>	6 <sup>1</sup> / <sub>2</sub> " (165 mm) R-19 batts
<b>Resilient Channels</b>	24" (610 mm) o.c. (vertical)



<b>Wood Joist</b>	2" × 10" (38 mm × 235 mm)
<b>Floor Topping</b>	1 <sup>9</sup> / <sub>32</sub> " OSB subfloor
<b>Fiberglass Thickness</b>	6 <sup>1</sup> / <sub>2</sub> " (165 mm) R-19 batts
<b>Resilient Channels</b>	24" (610 mm) o.c. (vertical)



<b>Wood Joist</b>	2" × 10" (38 mm × 235 mm)
<b>Floor Topping</b>	1 <sup>9</sup> / <sub>32</sub> " OSB subfloor + 1 <sup>3</sup> / <sub>8</sub> " concrete
<b>Fiberglass Thickness</b>	6 <sup>1</sup> / <sub>2</sub> " (165 mm) R-19 batts
<b>Resilient Channels</b>	24" (610 mm) o.c. (vertical)

# ***SPRAY FOAM***

---

*Johns Manville spray foam delivers high yield, superior performance and exceptional sprayability, making it an ideal choice for air-sealing and insulating energy-efficient buildings.*

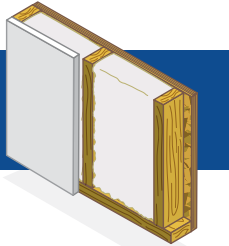


## Single Wood Studs

Single interior layer 1/2" (13 mm) Gypsum Board

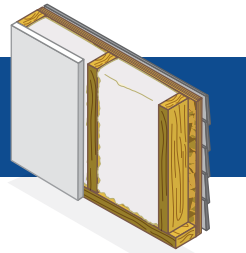
1 9/32" (14 mm) exterior OSB Sheathing

SOUND TRANSMISSION CLASS  
**34**



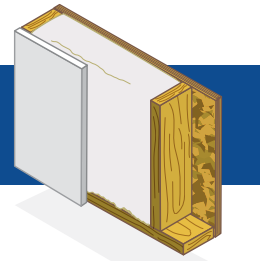
<b>Stud</b>	2" x 4" (38 mm x 89 mm)
<b>Stud Spacing</b>	16" (406 mm) o.c.
<b>Cavity Insulation</b>	Closed-cell SPF
<b>Cladding</b>	N.A.

SOUND TRANSMISSION CLASS  
**36**



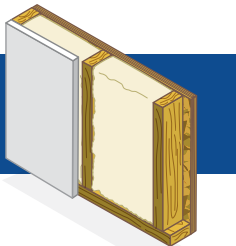
<b>Stud</b>	2" x 4" (38 mm x 89 mm)
<b>Stud Spacing</b>	16" (406 mm) o.c.
<b>Cavity Insulation</b>	Closed-cell SPF
<b>Cladding</b>	Fiber cement lap siding

SOUND TRANSMISSION CLASS  
**37**



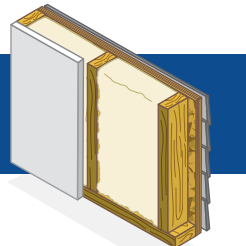
<b>Stud</b>	2" x 6" (38 mm x 140 mm)
<b>Stud Spacing</b>	24" (610 mm) o.c.
<b>Cavity Insulation</b>	Closed-cell SPF
<b>Cladding</b>	N.A.

SOUND TRANSMISSION CLASS  
**38**



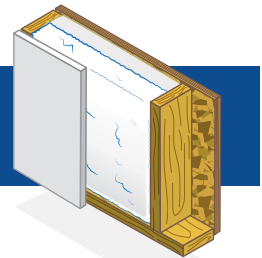
<b>Stud</b>	2" x 4" (38 mm x 89 mm)
<b>Stud Spacing</b>	16" (406 mm) o.c.
<b>Cavity Insulation</b>	Open-cell SPF
<b>Cladding</b>	N.A.

SOUND TRANSMISSION CLASS  
**40**



<b>Stud</b>	2" x 4" (38 mm x 89 mm)
<b>Stud Spacing</b>	16" (406 mm) o.c.
<b>Cavity Insulation</b>	Open-cell SPF
<b>Cladding</b>	Fiber cement lap siding

SOUND TRANSMISSION CLASS  
**44**



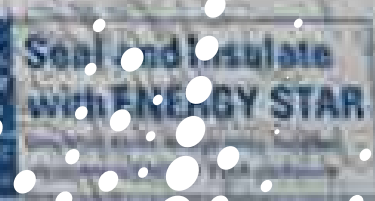
<b>Stud</b>	2" x 6" (38 mm x 140 mm)
<b>Stud Spacing</b>	24" (610 mm) o.c.
<b>Cavity Insulation</b>	Half closed-cell SPF & half R-13 fiberglass batt
<b>Cladding</b>	N.A.





# ***SHEATHING CONTINUOUS INSULATION***

*Rigid polyisocyanurate foam sheathing insulation for use in commercial and residential construction where continuous insulation and/or high thermal efficiency is required.*



1200 West 10th Street, Suite 100  
 Denver, CO 80202 • 1-800-451-7272  
 © 2013 Owens Corning. All Rights Reserved.

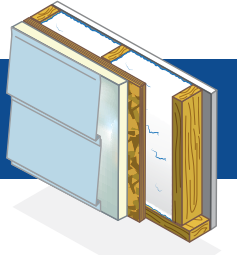
10

## Exterior Residential Walls

2" x 4" (38 mm x 89 mm) Wood Studs	16" (406 mm) o.c. Stud Spacing	Single interior layer 1/2" (13 mm) Gypsum Board
3 5/8" (92 mm) R-13 Fiberglass Batts	7/16" (11 mm) OSB Exterior Sheathing	AP™ Foil-Faced Foam Sheathing Continuous Insulation

SOUND TRANSMISSION CLASS

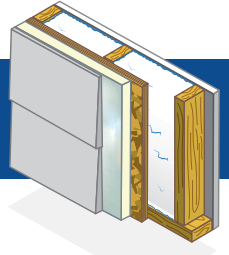
# 34



<b>Resilient Channels</b>	No
<b>Continuous Insulation</b>	R-5 AP Foil
<b>Cladding</b>	Vinyl lap siding

SOUND TRANSMISSION CLASS

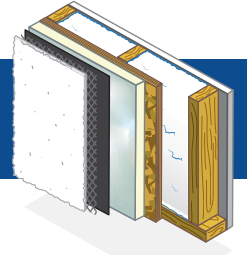
# 37



<b>Resilient Channels</b>	No
<b>Continuous Insulation</b>	R-5 AP Foil
<b>Cladding</b>	Fiber cement lap siding

SOUND TRANSMISSION CLASS

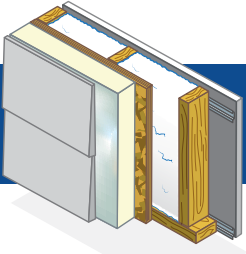
# 45



<b>Resilient Channels</b>	No
<b>Continuous Insulation</b>	R-5 AP Foil
<b>Cladding</b>	7/8" stucco

SOUND TRANSMISSION CLASS

# 45



<b>Resilient Channels</b>	24" (610 mm) o.c. (vertical)
<b>Continuous Insulation</b>	R-13 AP Foil
<b>Cladding</b>	Vinyl lap siding

SOUND TRANSMISSION CLASS

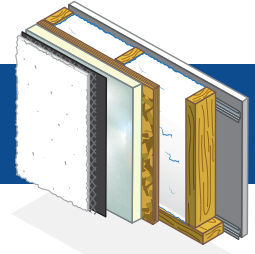
# 47



<b>Resilient Channels</b>	24" (610 mm) o.c. (vertical)
<b>Continuous Insulation</b>	R-13 AP Foil
<b>Cladding</b>	Fiber cement lap siding

SOUND TRANSMISSION CLASS

# 55



<b>Resilient Channels</b>	24" (610 mm) o.c. (vertical)
<b>Continuous Insulation</b>	R-5 AP Foil
<b>Cladding</b>	7/8" stucco



**Johns Manville**  
*A Berkshire Hathaway Company*

**Visit our website at [www.JM.com](http://www.JM.com) or call 800 654 3103**

**Building Insulation Division P.O. Box 5108 | Denver, CO 80217-5108**

*Technical specifications as shown in this literature are intended to be used as general guidelines only. Please refer to the Safety Data Sheet and product label prior to using any product. The physical and chemical properties of thermal and acoustical fiberglass insulation listed herein represent typical, average values obtained in accordance with accepted test methods and are subject to normal manufacturing variations. They are supplied as a technical service and are subject to change without notice.*

*All Johns Manville products are sold subject to Johns Manville's standard Terms and Conditions, which includes a Limited Warranty and Limitation of Remedy. For a copy of the Johns Manville standard Terms and Conditions or for information on other Johns Manville insulation and systems, visit [www.JM.com/terms-conditions](http://www.JM.com/terms-conditions) or call 800 654 3103.*

© 2019 Johns Manville. All Rights Reserved.