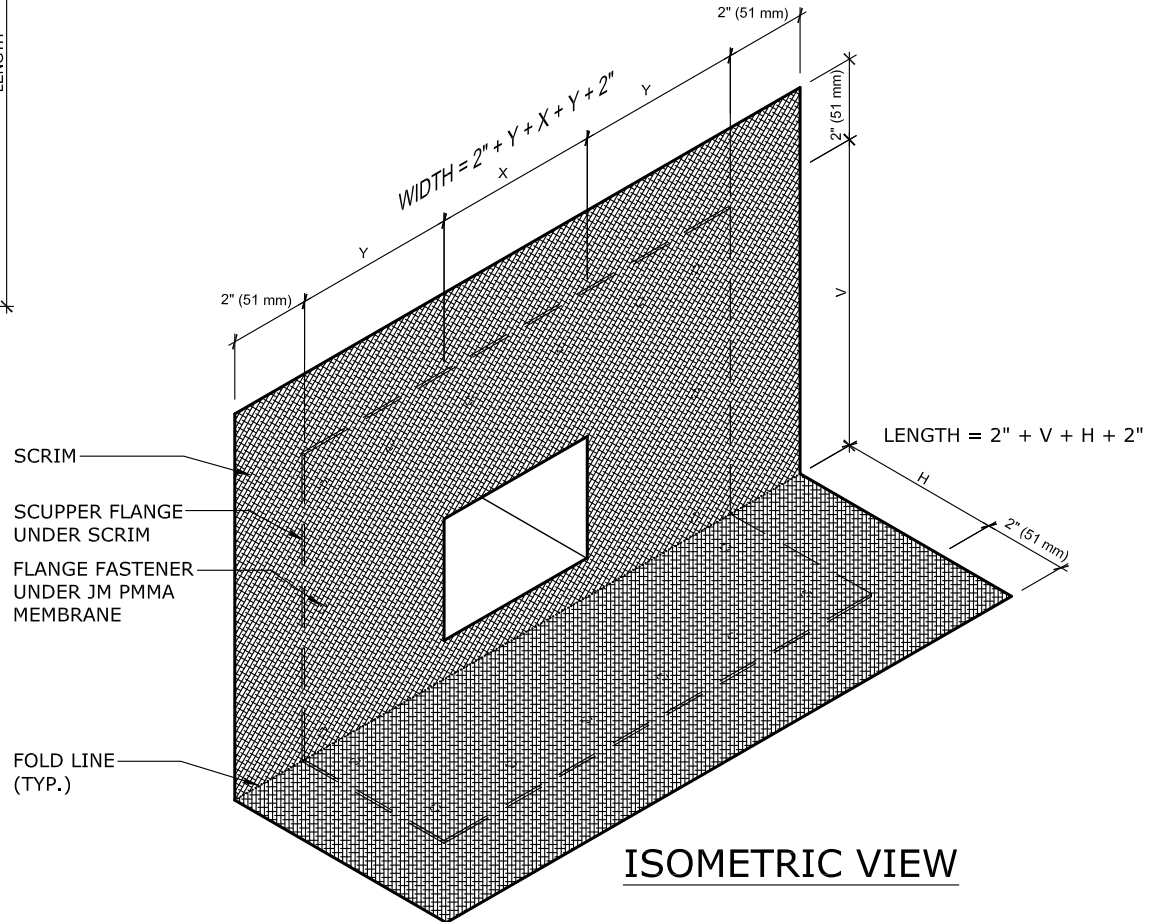


ELEVATION VIEW

USE THIS DETAIL IN CONJUNCTION WITH DETAIL LB-DV-03 WHICH IS PART OF THIS INSTALLATION.



ISOMETRIC VIEW

NOTES:

- A. ALL FOLD LINES REPRESENTED AS
ALL CUT LINES REPRESENTED AS - - - - -
- B. AN EXTRA COAT OF JM PMMA RESIN MUST BE PLACED BETWEEN SCRIM LAYERS WHERE THEY OVERLAP TO ENSURE A PROPER BOND.

JM PMMA OVERFLOW SCUPPER FLASHING SCRIM LAYOUT

DRAWING NO.
LB-DV-03S
NEW DETAIL

MEMBRANE TYPE:
JM PMMA OVER BITUMINOUS
MAXIMUM GUARANTEE TERM:
20 YEAR

ISSUE DATE
6-18-18
SCALE
N.T.S

Johns Manville is a manufacturer of commercial roofing products and offers this general conceptual information to you as a courtesy. This complimentary assistance is not to be used or relied upon by anyone as a substitute for professional engineering design and documentation required by building code, contract, or applicable law. By accepting these comments you agree they do not constitute any representations, endorsements of, or an assumption by Johns Manville of any liability for either the adequacy of the design of this building or any other material not supplied by Johns Manville.

